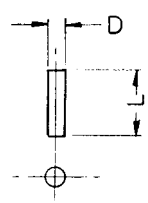
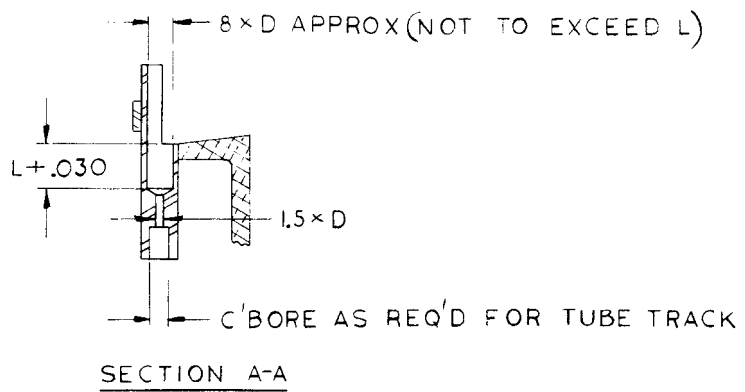
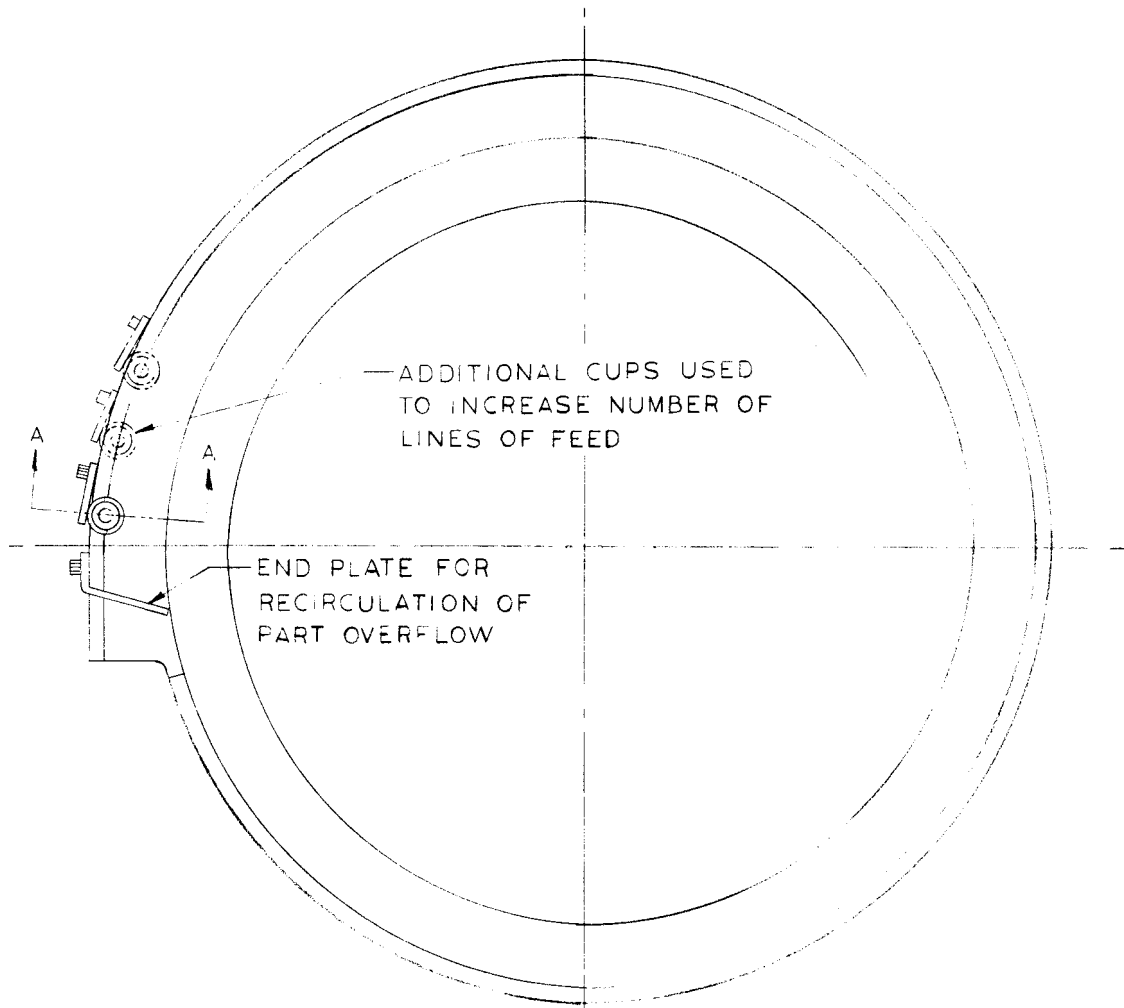


VIBRATORY FEEDER COMPANY AUTOMATION PARK, BOX AD FAIRVIEW, PA. 16415 PHONE 814/474-5561		CASE NO. <b>46</b>	
DWN DATE <i>Rgn</i> 7-5-66 CHK'D DATE 9-8-66	SCALE - ~ SK. NO. 2049	PIN-LENGTH GREATER THAN DIAMETER	PART FED



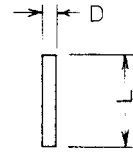
©1966 BY VIBRATORY FEEDER CO.  
 A DIVISION OF  
 AUTOMATION DEVICES, INC.

VIBRATORY FEEDER COMPANY

AUTOMATION PARK, BOX AD  
FAIRVIEW, PA. 16415  
PHONE 814/474-5561

CASE NO.

47



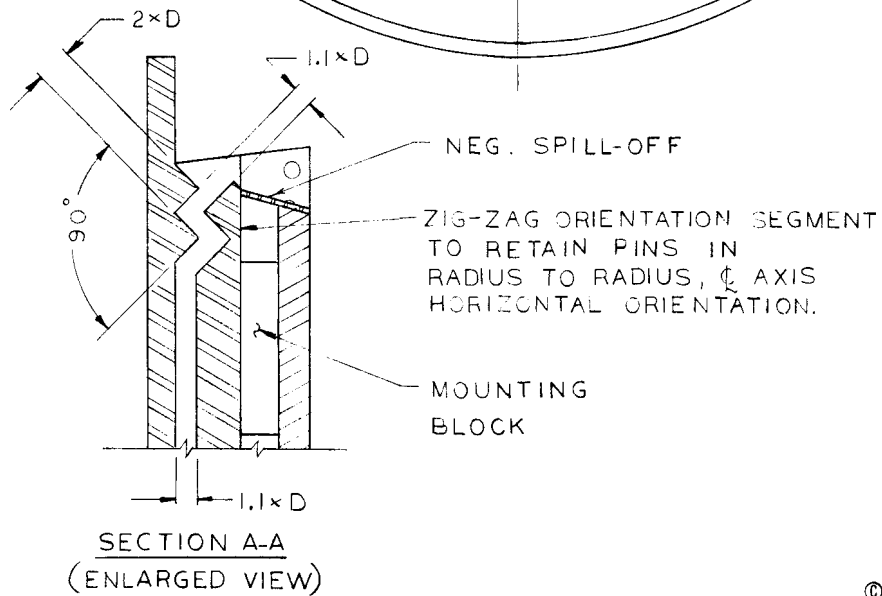
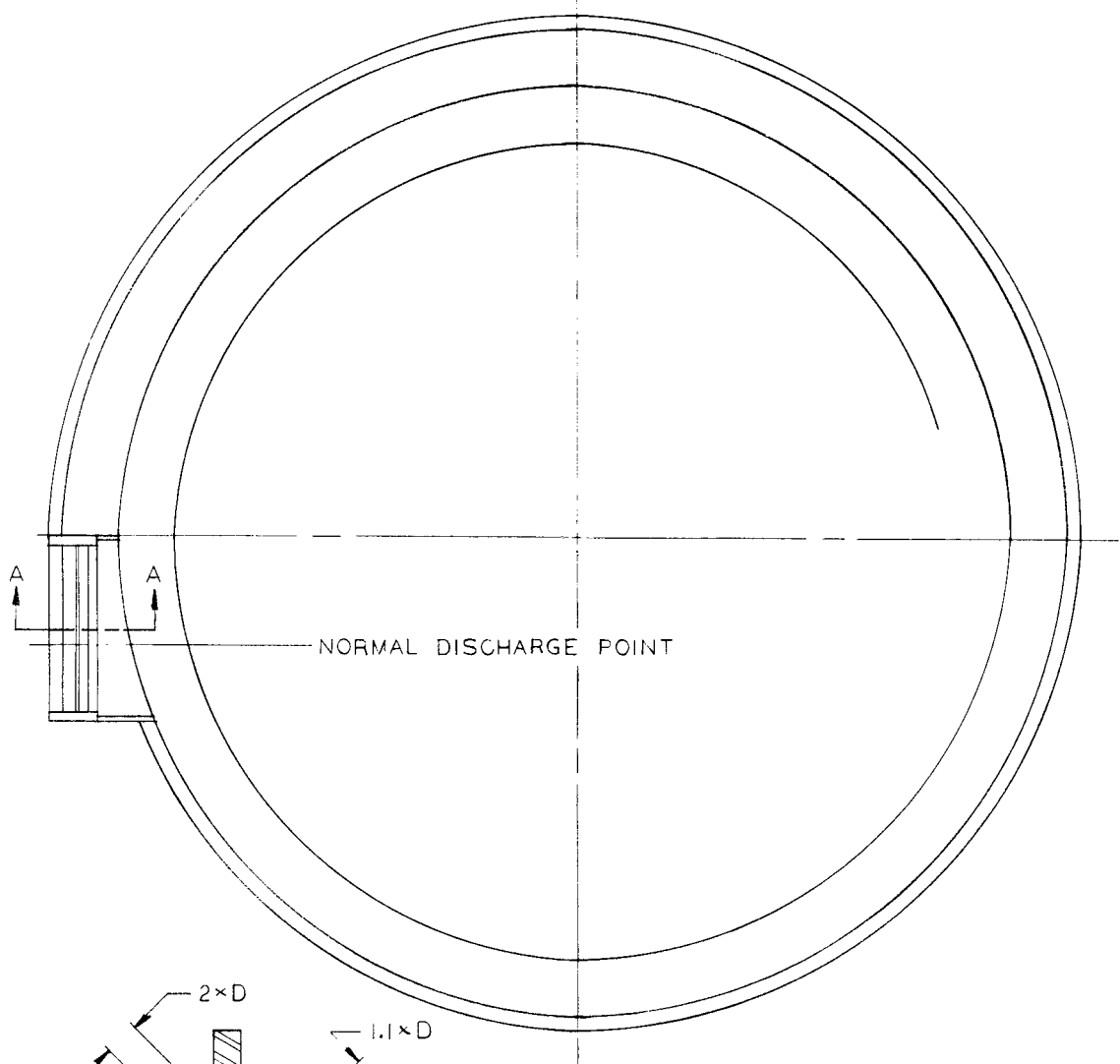
DWN *R.M.S*  
DATE 4-27-66  
CHK'D *[initials]*  
DATE 8-1-66

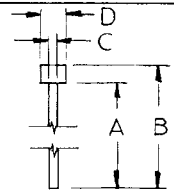
SCALE ~

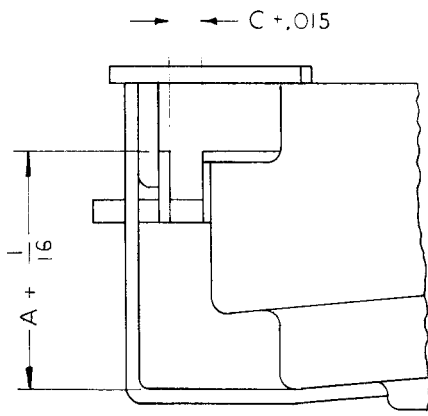
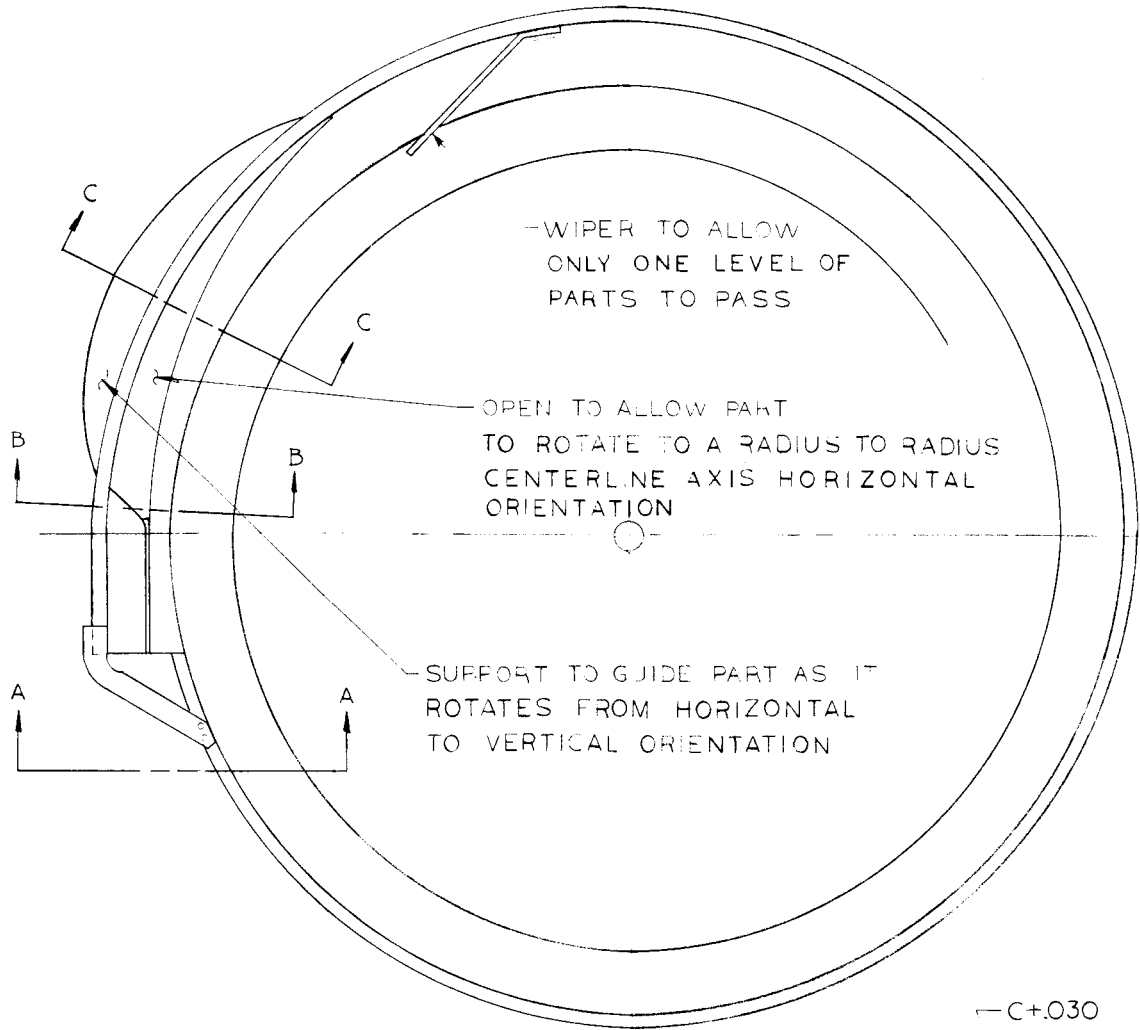
SK. NO. 2050

PIN-MINIMUM  
LENGTH IS  
3× DIAMETER

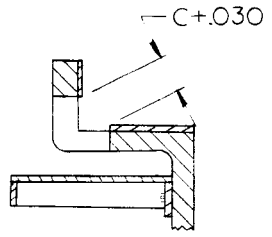
PART FED



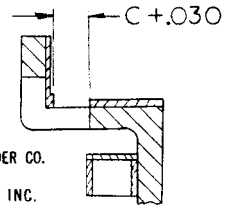
VIBRATORY FEEDER COMPANY AUTOMATION PARK, BOX AD FAIRVIEW, PA. 16415 PHONE 314/474-5561		CASE NO. <b>48</b>	
DWN. <i>R.W.S.</i> DATE 5-2-66 CHK'D <i>[Signature]</i> DATE 8-1-66	SCALE ~ SK. NO. 2051	HEADED PINS WITH EXTRA LONG BODIES	PART FED



SECTION A-A

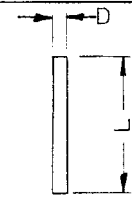


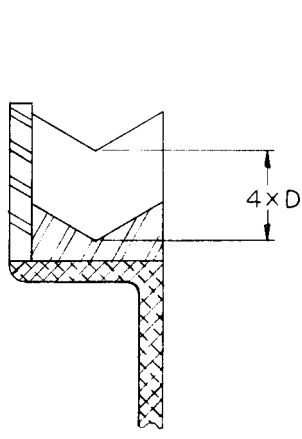
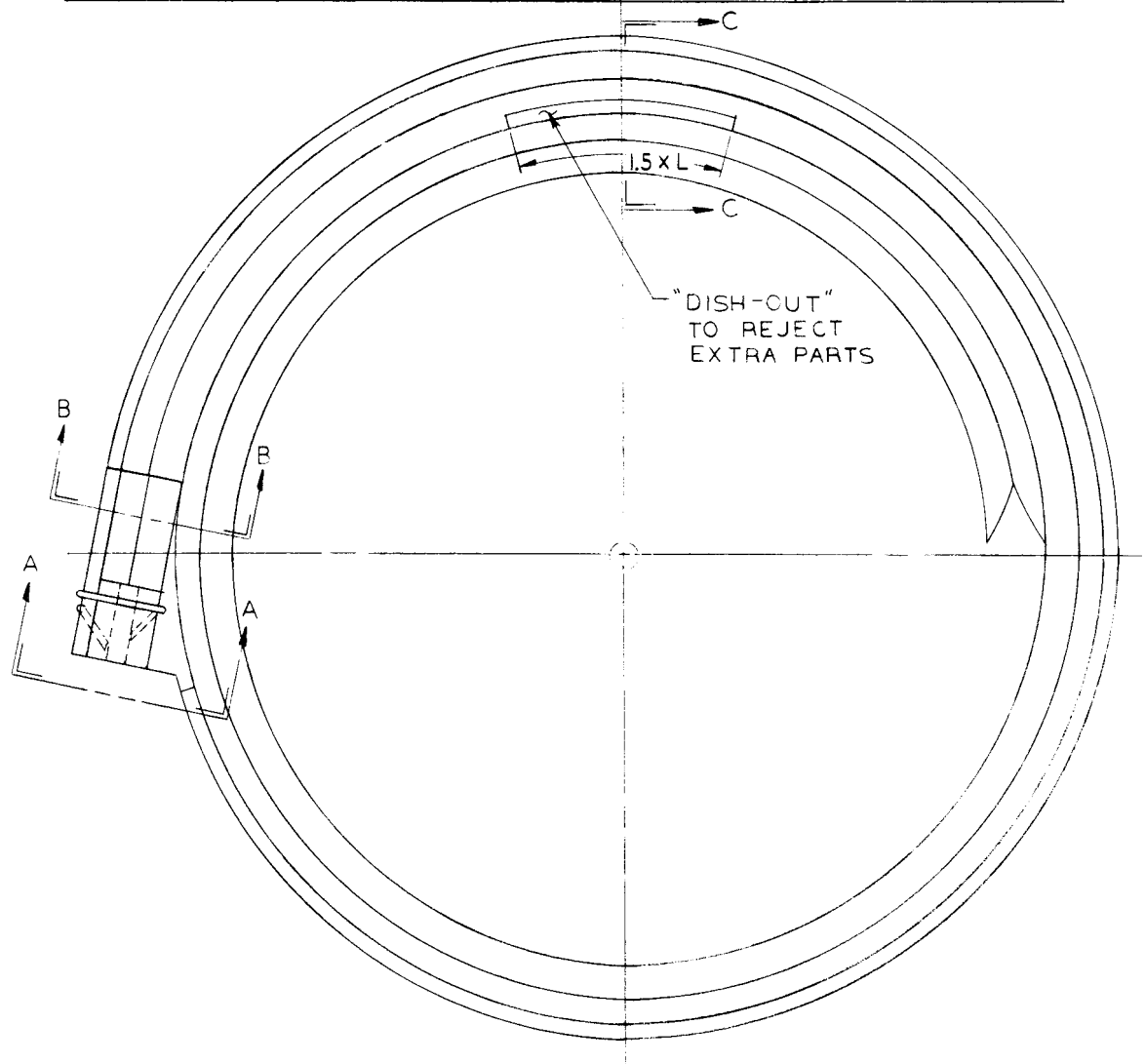
SECTION C-C



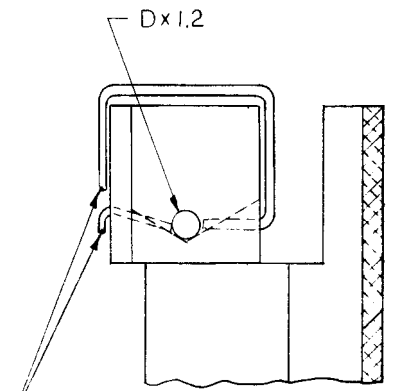
SECTION B-B

© 1966 BY VIBRATORY FEEDER CO.  
 A DIVISION OF  
 AUTOMATION DEVICES, INC.

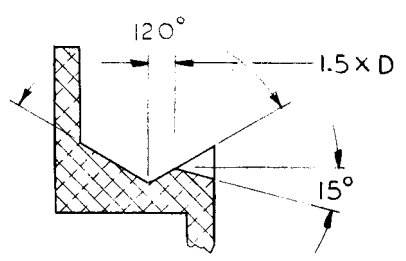
<b>VIBRATORY FEEDER COMPANY</b> AUTOMATION PARK, BOX AD FAIRVIEW, PA. 16415 PHONE 814/474-5561		CASE NO. <b>49</b>	
DWN <i>R.W.B.</i> DATE 5-3-66 CHK'D <input checked="" type="checkbox"/> DATE 8-1-66	SCALE $\sim$ SK. NO. 2052	PIN WITH LENGTH GREATER THAN DIAMETER	PART FED



SECTION B-B

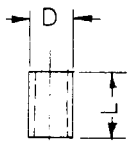
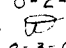


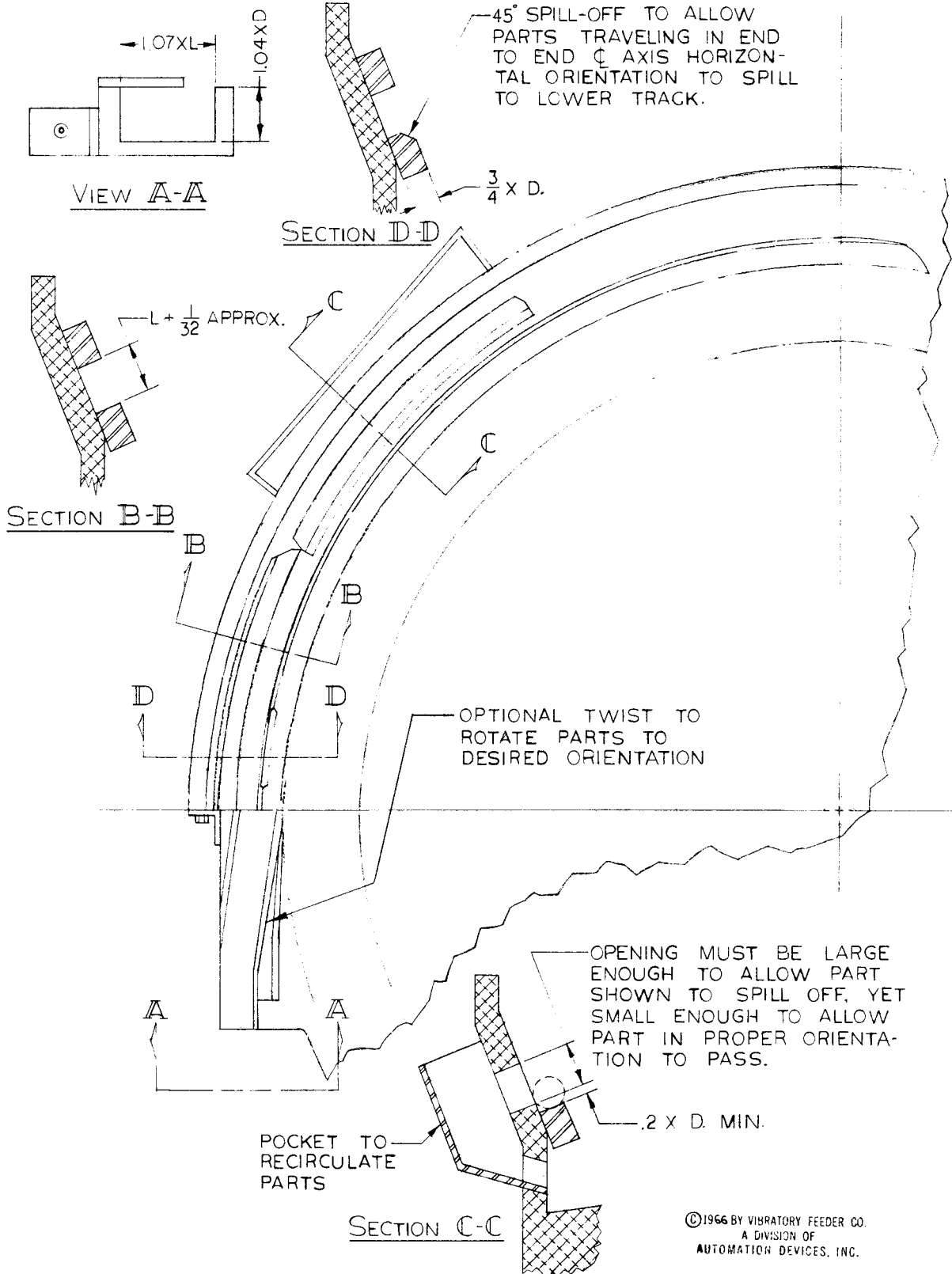
SECTION A-A



SECTION C-C

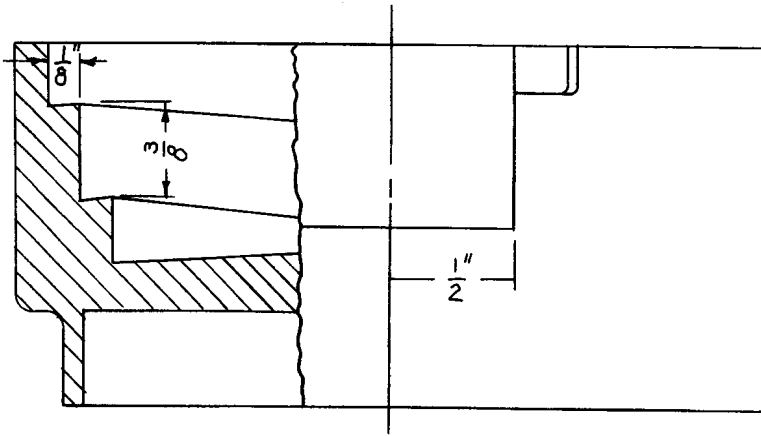
© 1966 BY VIBRATORY FEEDER CO.  
 A DIVISION OF  
 AUTOMATION DEVICES, INC.

VIBRATORY FEEDER COMPANY AUTOMATION PARK, BOX AD FAIRVIEW, PA. 16415 PHONE 814/474-5561		CASE NO. <b>50</b>	
DWN. V.M.I. DATE 8-2-66 CHK'D.  DATE 8-3-66	SCALE ~ SK. NO. 2053	CYLINDRICAL PART WITH LENGTH GREATER THAN DIAMETER	PART FED

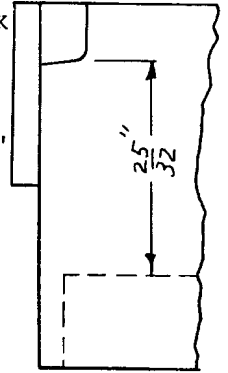


©1966 BY VIBRATORY FEEDER CO.  
 A DIVISION OF  
 AUTOMATION DEVICES, INC.

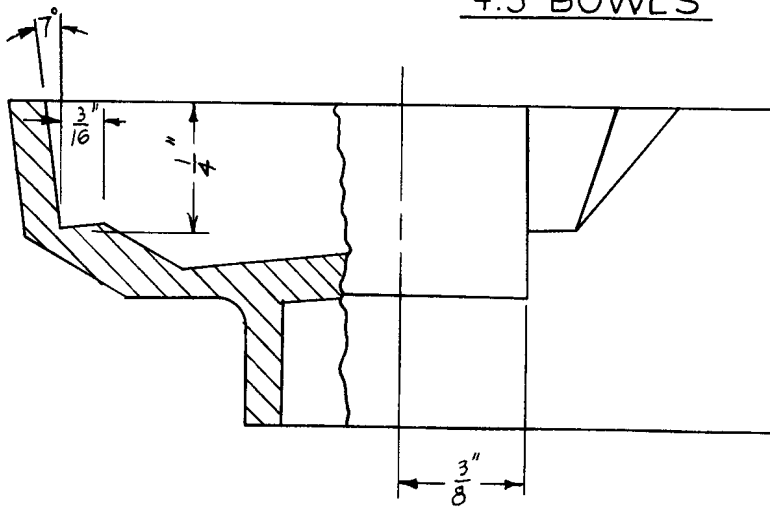
# 3" BOWLS



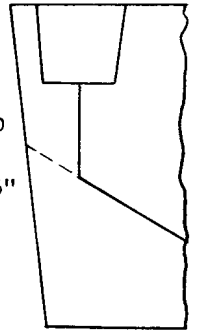
SERIES 171 3-7/8-2 CLK  
 SERIES 170 3-7/8-2 CC  
 STANDARD 7° POSITIVE  
 TRACK FOR FULL LENGTH.  
 PITCH - 3/8"  
 DISCHARGE HEIGHT-25/32"



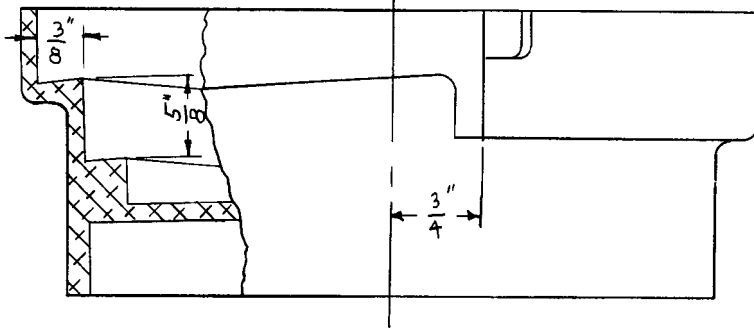
# 4.5" BOWLS



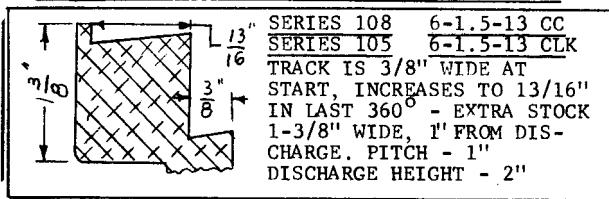
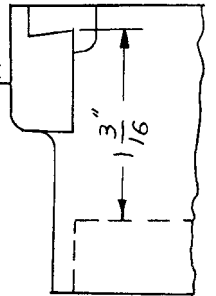
SERIES 215 4.5-5-3 CLK  
 SERIES 188 4.5-5-3 CC  
 SAUCER BOWL 3/4 REVOLU-  
 TION OF TRACK WITH 30°  
 ANGLE FROM TRACK BACK TO  
 FLOOR OF BOWL.  
 PITCH - 5/16"  
 DISCHARGE HEIGHT - 13/16"



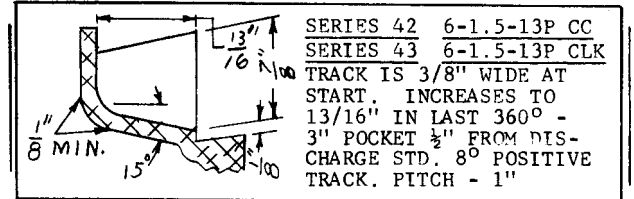
# 6" BOWLS



SERIES 60 6-1.5-6 CC  
 SERIES 62 6-1.5-6 CLK  
 STD. 8° POSITIVE FOR  
 FULL LENGTH.  
 PITCH - 5/8"

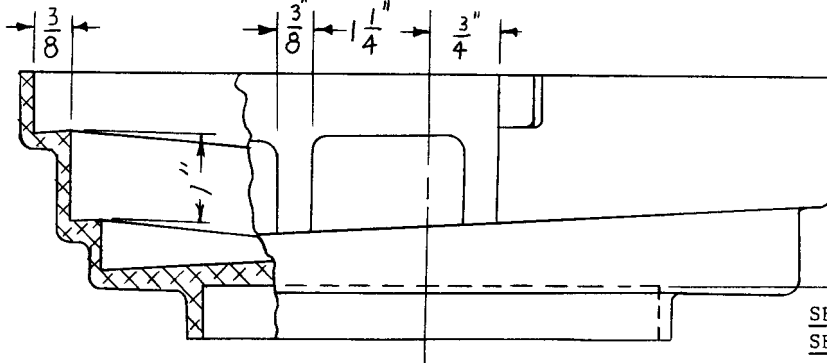


SERIES 108 6-1.5-13 CC  
 SERIES 105 6-1.5-13 CLK  
 TRACK IS 3/8" WIDE AT  
 START, INCREASES TO 13/16"  
 IN LAST 360° - EXTRA STOCK  
 1-3/8" WIDE, 1" FROM DIS-  
 CHARGE. PITCH - 1"  
 DISCHARGE HEIGHT - 2"

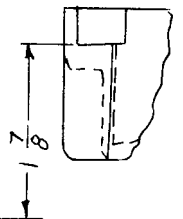


SERIES 42 6-1.5-13P CC  
 SERIES 43 6-1.5-13P CLK  
 TRACK IS 3/8" WIDE AT  
 START, INCREASES TO  
 13/16" IN LAST 360° -  
 3" POCKET 1/2" FROM DIS-  
 CHARGE STD. 8° POSITIVE  
 TRACK. PITCH - 1"

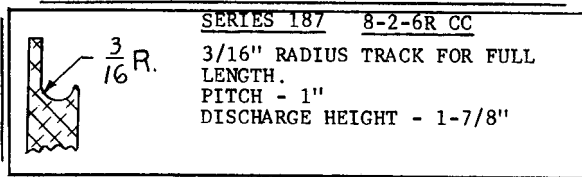
# 8" BOWLS



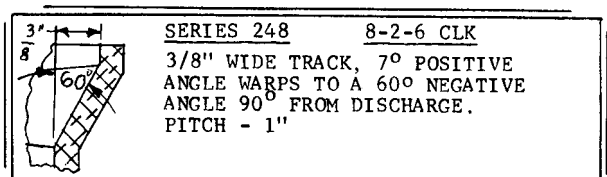
STANDARD 7°  
 POSITIVE  
 TRACK FULL  
 LENGTH.  
 PITCH - 1"  
 DISCHARGE  
 HT. - 1-7/8"



SERIES 150 8-2-6 CC  
 SERIES 151 8-2-6 CLK

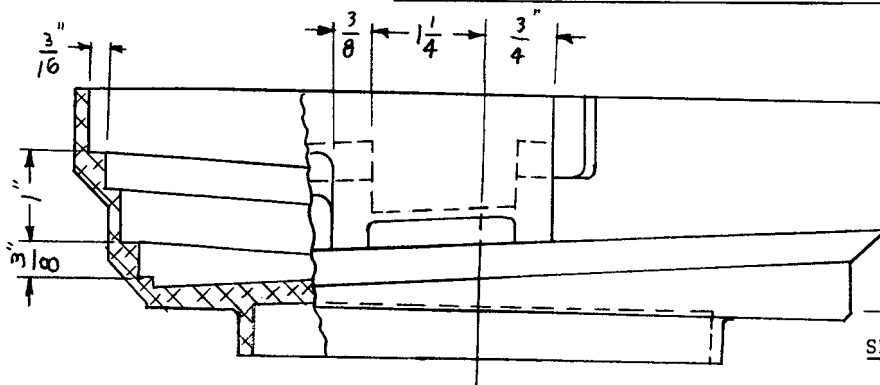


SERIES 187 8-2-6R CC  
 3/16" RADIUS TRACK FOR FULL  
 LENGTH.  
 PITCH - 1"  
 DISCHARGE HEIGHT - 1-7/8"

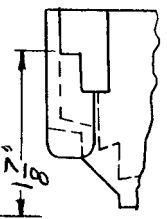


SERIES 248 8-2-6 CLK  
 3/8" WIDE TRACK, 70° POSITIVE  
 ANGLE WARPS TO A 60° NEGATIVE  
 ANGLE 90° FROM DISCHARGE.  
 PITCH - 1"

# 8" MULTIPLE TRACK BOWLS



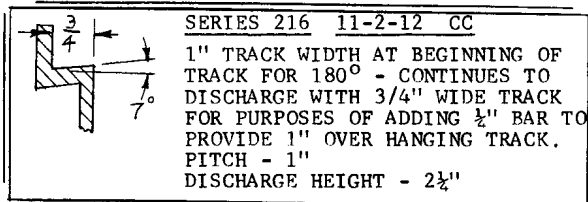
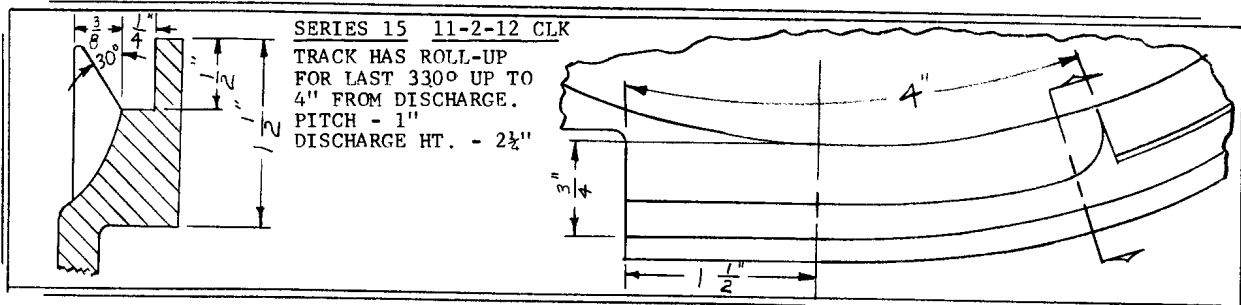
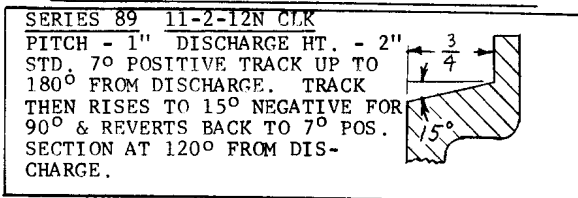
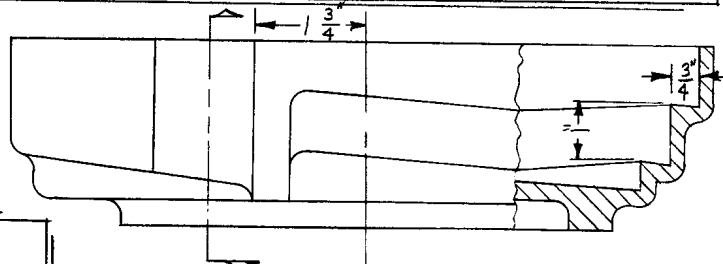
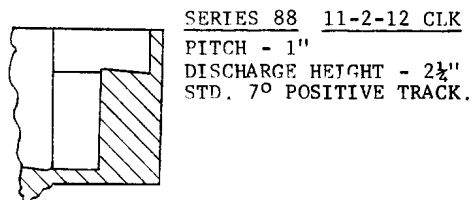
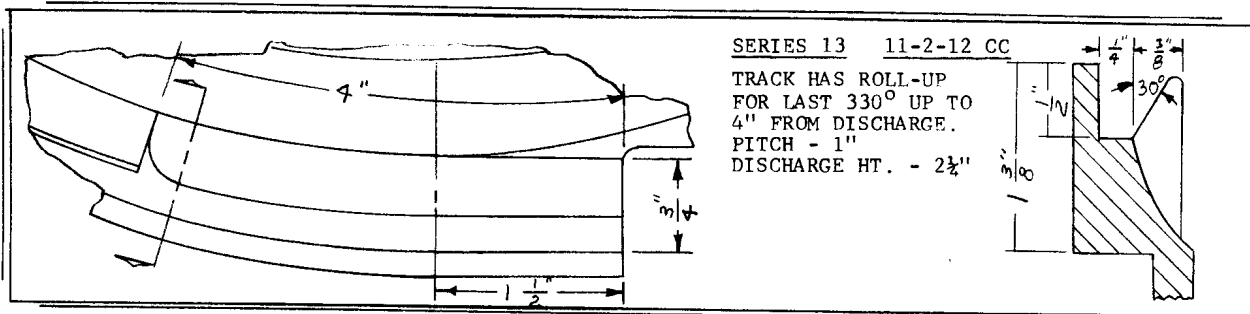
STANDARD 7°  
 POS. TRACK  
 FULL LENGTH,  
 WITH POCKET.  
 PITCH - 1"  
 DISCHARGE  
 HT. - 1-7/8"



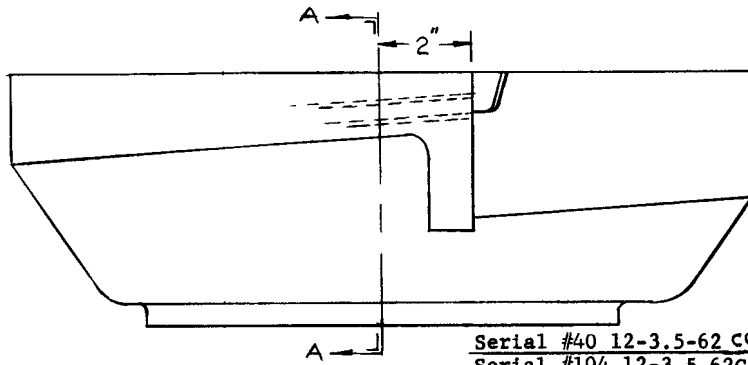
SERIES 166 8-2-3-2 CC



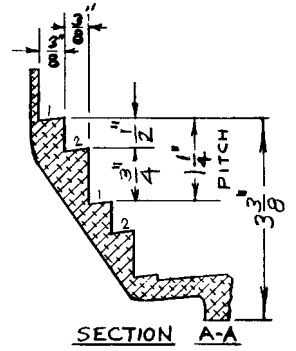
# 11" BOWLS



# 12" MULTIPLE TRACK BOWLS

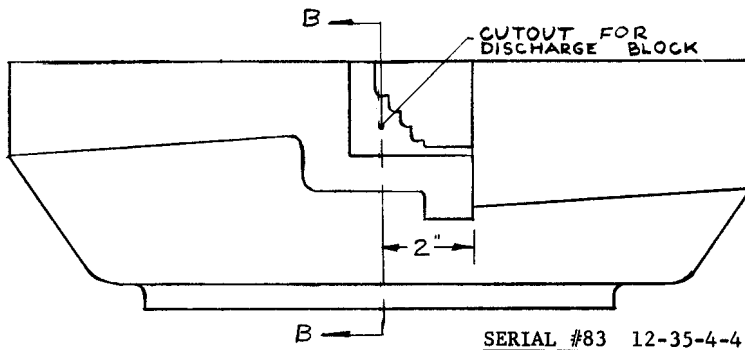


STD. 70° DUAL TRACK

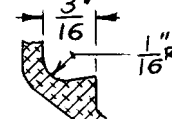


SECTION A-A

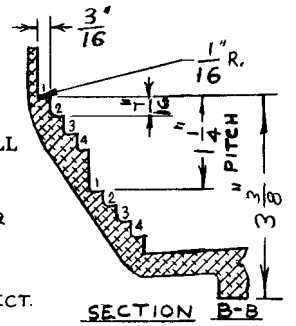
Serial #40 12-3.5-62 CC  
 Serial #104 12-3.5-62CLK



70° POS. TRACK WITH  
 1/16" R. FORM TO WALL

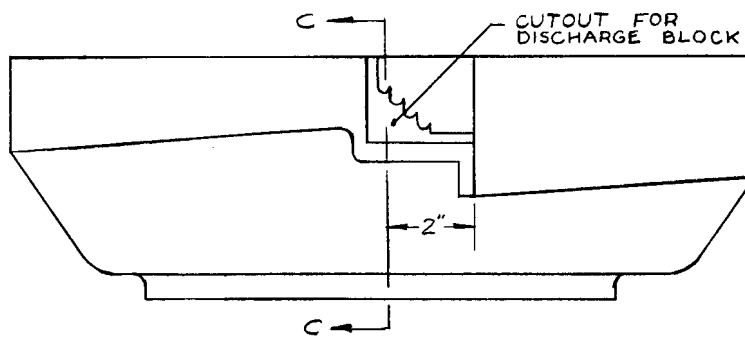


ENL'GED TRACK SECT.

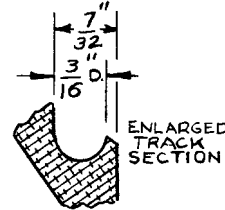


SECTION B-B

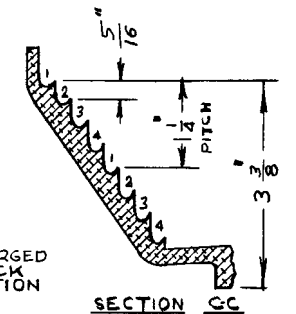
SERIAL #83 12-35-4-4 CC



3/16" DIA. FORM FOR  
 FULL LENGTH OF 4  
 TRACKS

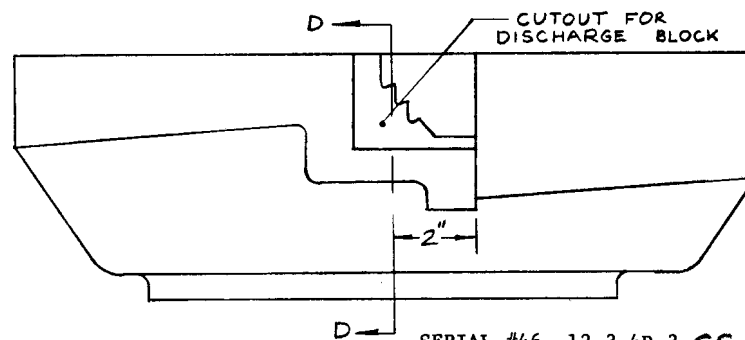


ENLARGED  
 TRACK  
 SECTION

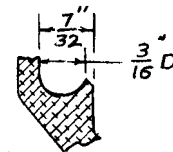


SECTION C-C

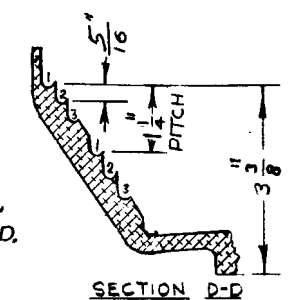
SERIAL #55 12-3-4R-4 CC



3/16" DIAMETER FORM  
 FOR FULL LENGTH OF  
 THREE TRACKS.

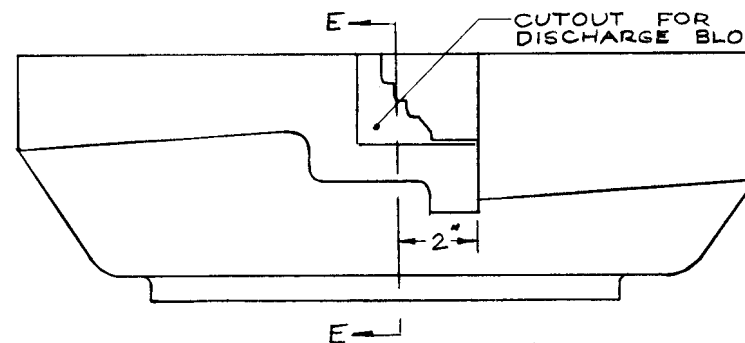


ENL'GED TRACK SEC.

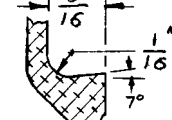


SECTION D-D

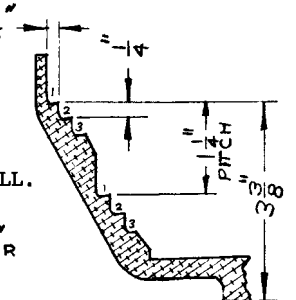
SERIAL #46 12-3-4R-3 CC



70° POS. TRACK WITH  
 1/16" R. FORM TO WALL.



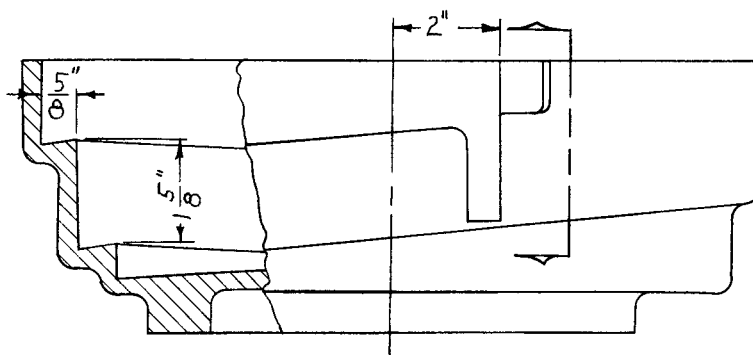
ENL'GED TRACK SECT.



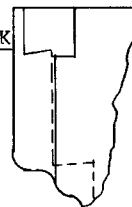
SECTION E-E

SERIAL #126 12-3.5-4-3 CC

### 12" BOWLS



SERIES 130 12-3.5-10 CC  
 SERIES 131 12-3.5-10 CLK  
 STD. 7° POS. TRACK FOR  
 FULL LENGTH OF TRACK.  
 PITCH - 1-5/8"  
 DISCHARGE HT. - 3 1/2"

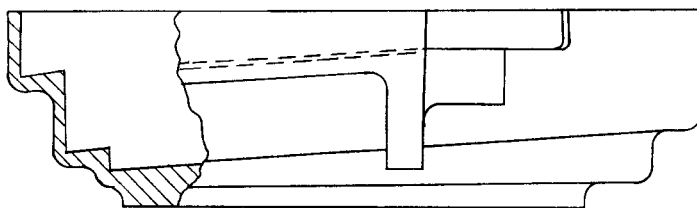


SERIES 138 12-3.5-10V CC  
 SERIES 163 12-3.5-10V CLK  
 STD. "v" TRACK FOR FULL LENGTH  
 OF TRACK. PITCH - 1-5/8"  
 DISCHARGE HEIGHT - 3 1/2"

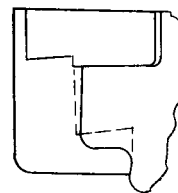
SERIES 148 12-3.5-10N60 CC  
 SERIES 153 12-3.5-10N60 CLK  
 HI-NEGATIVE TRACK FOR LAST 6"  
 ROLL-UP TO NEGATIVE STARTS 14"  
 FROM DISCHARGE.  
 PITCH - 1-5/8"  
 DISCHARGE HEIGHT - 2-5/8"

SERIES 174 12-3.5-10P CC  
 STD. 7° POSITIVE FULL LENGTH  
 OF TRACK.  
 3" POCKET 1/2" FROM DISCHARGE  
 PITCH - 1-5/8"  
 DISCHARGE HEIGHT - 3-7/16"

### 15" BOWLS



SERIES 54 15-3-16 CC  
 SERIES 39 15-3-16 CLK  
 STD. 8° POSITIVE TRACK  
 FOR FULL LENGTH.  
 PITCH - 1 1/2"  
 DISCHARGE HEIGHT - 3 1/2"

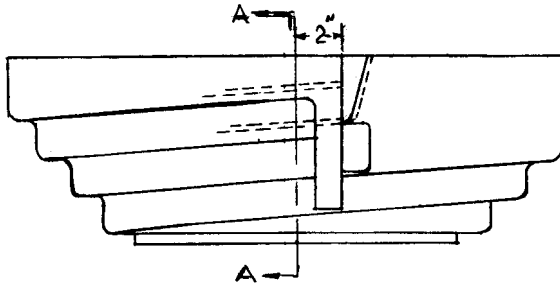


SERIES 82 15-3-32N CC  
 15° NEGATIVE FOR 90° FROM  
 DISCHARGE-REST, 8° POS-  
 ITIVE TRACK-RISE TO NEG-  
 ATIVE.  
 PITCH - 1 1/2"  
 DISCHARGE HEIGHT - 3 1/2"

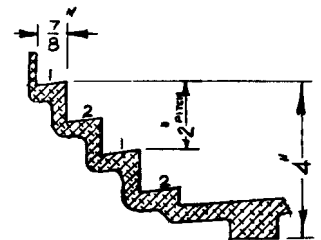
SERIES 14 15-3-24N CC  
 SERIES 81 15-3-24N CLK  
 TRACK STARTS 8° POSITIVE -  
 IS 15° NEG. FOR LAST 90°.  
 RISES TO NEGATIVE.  
 PITCH - 1 1/2"  
 DISCHARGE HEIGHT - 3 1/2"

SERIES 212 15-3.5-12 VP CC  
 90° "v" TRACK FOR 90° CENTER OF  
 "v" 13/32" FROM WALL, 3/4" TRACK.  
 PITCH - 1-5/8"  
 DISCHARGE HEIGHT - 3 1/2"

MODEL 15 MULTIPLE TRACK BOWLS

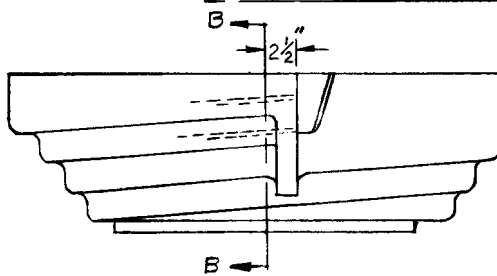


STD. 8° POS. DUAL  
7/8" TRACK, 18" BOWL.

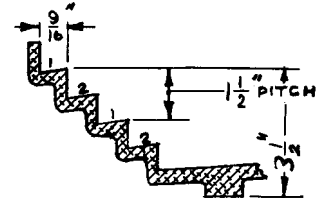


SECTION A-A

SERIAL #35 18-4-14-2 CC  
SERIAL #29 18-4-14-2 CLK

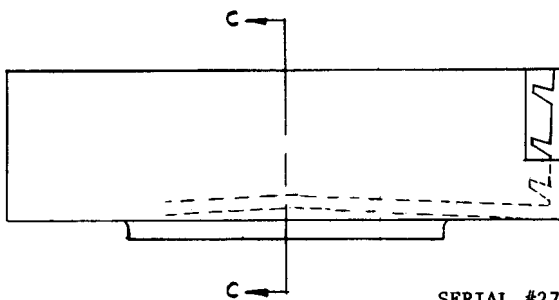


STD. 16", 8° POS., DUAL  
9/16" TRACK BOWL.

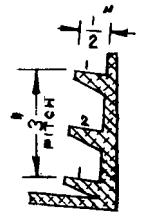


SECTION B-B

SERIAL #19 16-35-9-2 CC

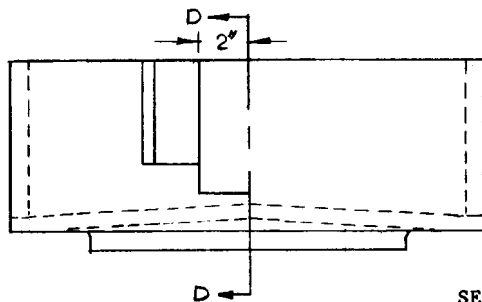


18" SPECIAL ROUND BOWL; DUAL  
STD. 1/2" TRACKS - STRAIGHT  
WALL - NO EXTENSION BE-  
YOND TANGENCY. DISCHARGE  
HT. - 4-1/4"



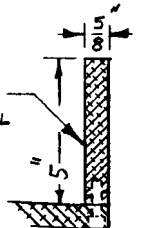
SECTION C-C

SERIAL #27 18-45-8-2 CLK



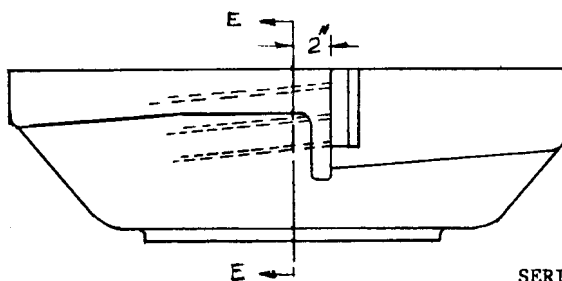
15" BOWL WITH BLANK WALLS  
FOR MACHINED MULTIPLE TRACKS.

MACHINE REQ'D.  
NUMBER OF  
TRACKS IN WALL



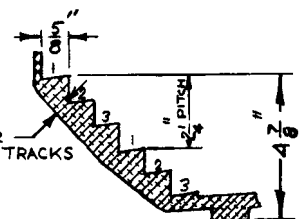
SECTION D-D

SERIAL #44 15 CLK



TRIPLE TRACK BOWL WITH  
STD. 8° POS., 5/8" TRACK.

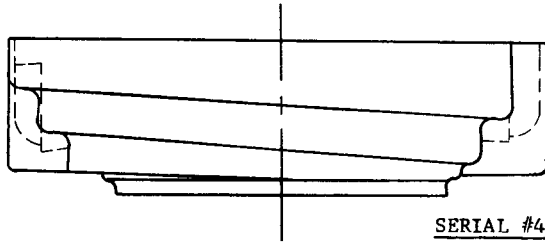
3/8" MIN. FOR  
FIRST 3 TRACKS



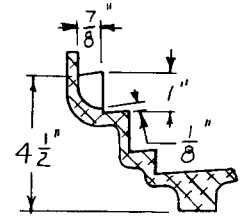
SECTION E-E

SERIAL #37 18-4.5-10-3 CC  
SERIAL #129 18-4.5-10-3 CLK

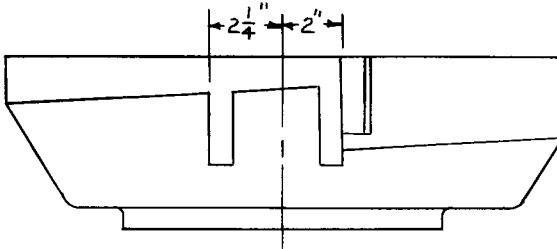
MODEL 15 MULTIPLE TRACK BOWLS



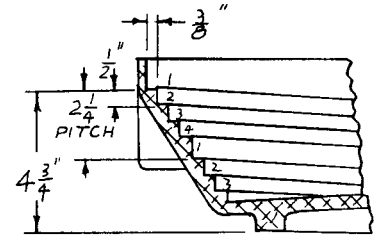
18" BOWL WITH DISCHARGE 180°  
APART. ST'D. 8° POS. TRACKS  
WITH POCKETS.



SERIAL #48 18-4-14-2S CLK

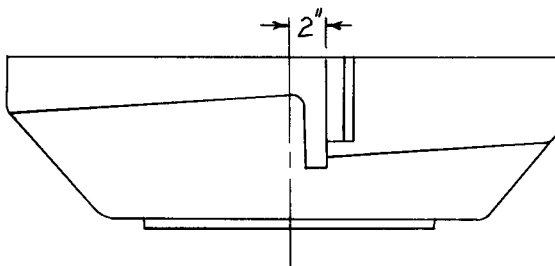


18" BOWL WITH  
4 STANDARD 7°  
POSITIVE TRACKS.

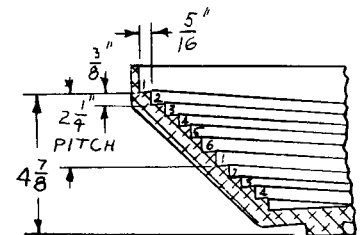


SERIAL #139 18-4.5-6-4 CC

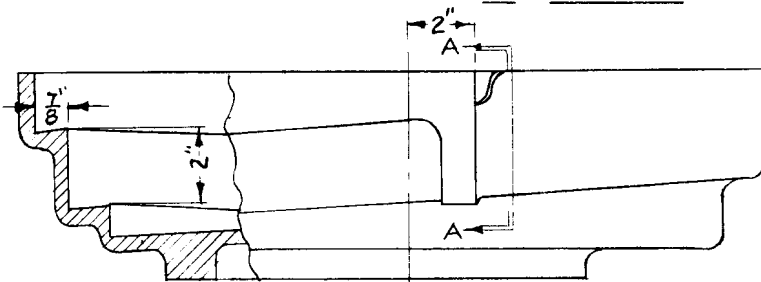
SERIAL #140 18-4.5-6-4 CLK



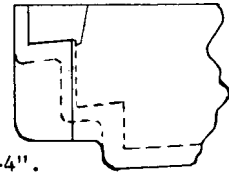
18" BOWL WITH 6  
STANDARD 7° POSI-  
TIVE TRACKS.



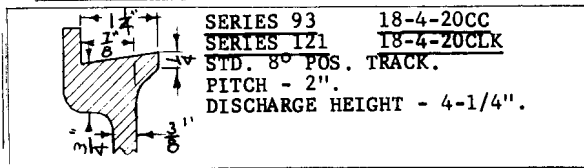
SERIAL #159 18-4.5-5-6 CLK



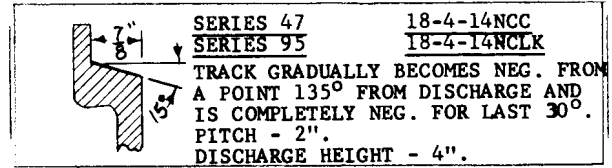
SERIES 74  
18-4-14CC  
SERIES 41  
18-4-14CLK  
STD. 7° POS.  
TRACK.  
PITCH - 2"  
DISCHARGE HT. - 4".



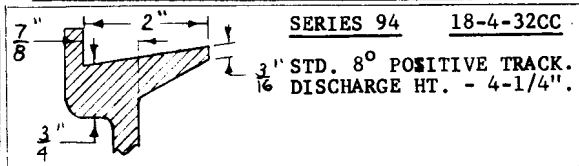
VIEW A-A



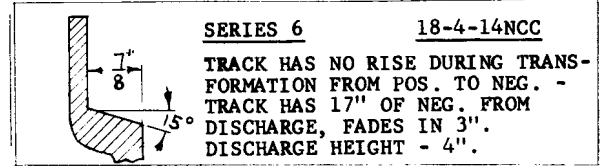
SERIES 93 18-4-20CC  
SERIES 121 18-4-20CLK  
STD. 8° POS. TRACK.  
PITCH - 2".  
DISCHARGE HEIGHT - 4-1/4".



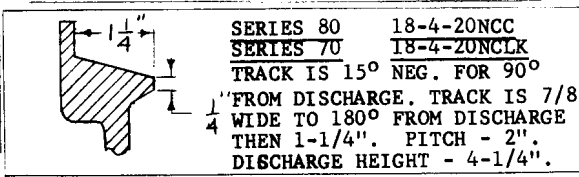
SERIES 47 18-4-14NCC  
SERIES 95 18-4-14NCLK  
TRACK GRADUALLY BECOMES NEG. FROM  
A POINT 135° FROM DISCHARGE AND  
IS COMPLETELY NEG. FOR LAST 30°.  
PITCH - 2".  
DISCHARGE HEIGHT - 4".



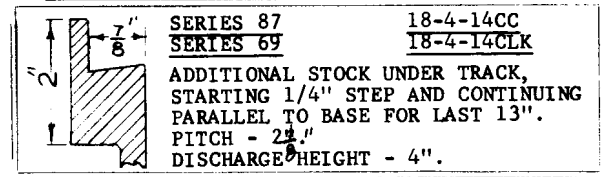
SERIES 94 18-4-32CC  
3/16" STD. 8° POSITIVE TRACK.  
DISCHARGE HT. - 4-1/4".



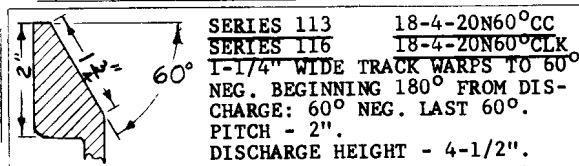
SERIES 6 18-4-14NCC  
TRACK HAS NO RISE DURING TRANS-  
FORMATION FROM POS. TO NEG. -  
TRACK HAS 17" OF NEG. FROM  
DISCHARGE, FADES IN 3".  
DISCHARGE HEIGHT - 4".



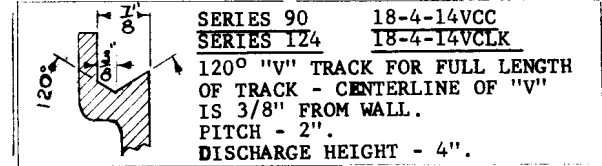
SERIES 80 18-4-20NCC  
SERIES 70 18-4-20NCLK  
TRACK IS 15° NEG. FOR 90°  
FROM DISCHARGE. TRACK IS 7/8"  
WIDE TO 180° FROM DISCHARGE  
THEN 1-1/4". PITCH - 2".  
DISCHARGE HEIGHT - 4-1/4".



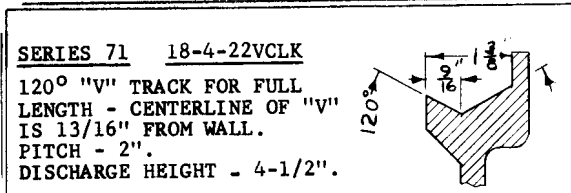
SERIES 87 18-4-14CC  
SERIES 69 18-4-14CLK  
ADDITIONAL STOCK UNDER TRACK,  
STARTING 1/4" STEP AND CONTINUING  
PARALLEL TO BASE FOR LAST 13".  
PITCH - 2".  
DISCHARGE HEIGHT - 4".



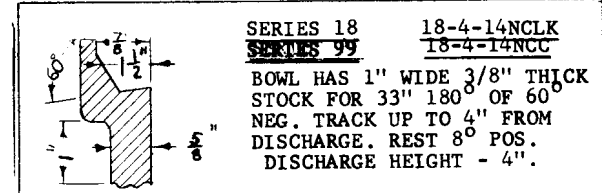
SERIES 113 18-4-20N60°CC  
SERIES 116 18-4-20N60°CLK  
1-1/4" WIDE TRACK WARPS TO 60°  
NEG. BEGINNING 180° FROM DIS-  
CHARGE: 60° NEG. LAST 60°.  
PITCH - 2".  
DISCHARGE HEIGHT - 4-1/2".



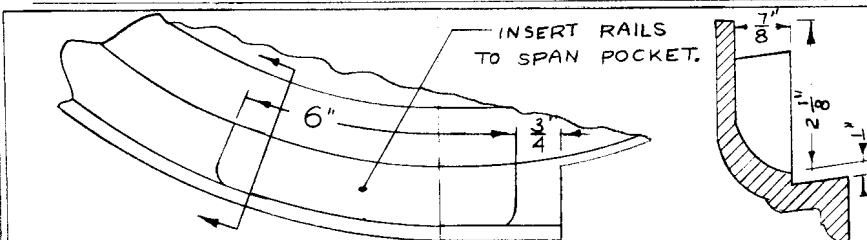
SERIES 90 18-4-14VCC  
SERIES 124 18-4-14VCLK  
120° "V" TRACK FOR FULL LENGTH  
OF TRACK - CENTERLINE OF "V"  
IS 3/8" FROM WALL.  
PITCH - 2".  
DISCHARGE HEIGHT - 4".



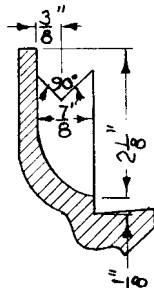
SERIES 71 18-4-22VCLK  
120° "V" TRACK FOR FULL  
LENGTH - CENTERLINE OF "V"  
IS 13/16" FROM WALL.  
PITCH - 2".  
DISCHARGE HEIGHT - 4-1/2".



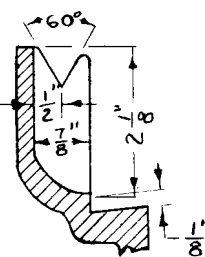
SERIES 18 18-4-14NCLK  
SERIES 99 18-4-14NCC  
BOWL HAS 1" WIDE 3/8" THICK  
STOCK FOR 33" 180° OF 60°  
NEG. TRACK UP TO 4" FROM  
DISCHARGE. REST 8° POS.  
DISCHARGE HEIGHT - 4".



SERIES 96 18-4-14PCC  
SERIES 4 18-4-14PCLK  
STD. 8° POS. TRACK FOR  
FULL LENGTH.  
PITCH - 2-1/8"  
DISCHARGE HEIGHT - 4".

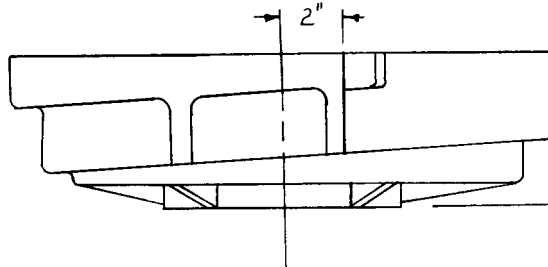


SERIES 118 - 18-4-14VPCC  
SERIES 135 - 18-4-14VPCLK  
90° "V" TRACK BEGINNING  
180° FROM DISCHARGE &  
ENDING AT POCKET. REMAIN-  
DER 7° POS. TRACK.  
DISCHARGE HEIGHT - 4".  
PITCH - 2".

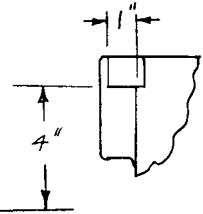


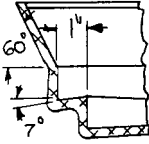
SERIES 109 - 18-4-14VPCC  
SERIES 106 - 18-4-14VPCLK  
60° "V" TRACK BEGINNING  
270° FROM DISCHARGE & ENDING AT  
POCKET. REMAINDER OF TRACK  
IS 7° POS.  
PITCH - 2".  
DISCHARGE HEIGHT - 4".

## 18" LIGHT BOWLS

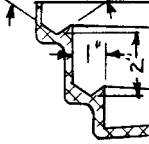


SERIES 154 18-4-16L CLK  
 SERIES 152 18-4-16L CC  
 STD. 7° POS. TRACK FOR FULL LENGTH. PITCH - 2"  
 DISCHARGE HEIGHT - 4"

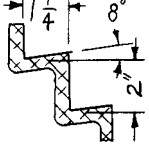


	SERIES 204 18-4-NL CLK
	SERIES 197 18-4-NL CC

STD. 60° NEG. STARTS 180° FROM TANGENCY & IS 60° NEG. AT 60° FROM TANGENCY. LAST 8" PARALLEL TO BASE. PITCH 2"  
 DISCHARGE HEIGHT - 3½"

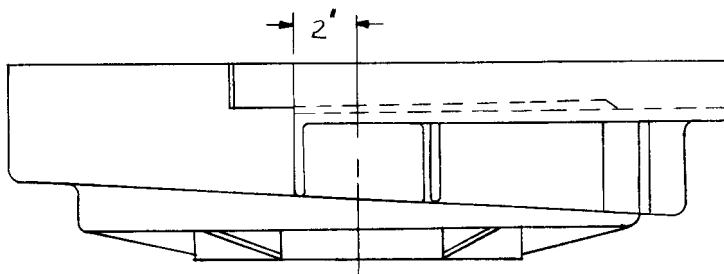
	SERIES 198 18-4-16-VL CC
	SERIES 205 18-4-16-VL CLK

STD. 120°V FULL LENGTH OF TRACK. LAST 8" PARALLEL TO BASE. PITCH - 2"  
 DISCHARGE HEIGHT - 4"

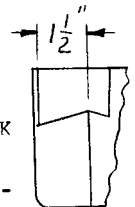
	SERIES 219 18-4-20 CLK
	SERIES 220 18-4-20 CC

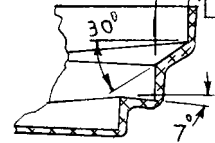
1½" WIDE 8° POSITIVE ANGLE FULL LENGTH TRACK.  
 DISCHARGE HEIGHT - 4-3/8"

## 24" LIGHT BOWLS



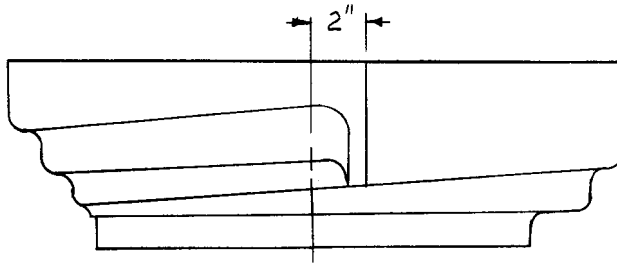
SERIES 168 24-5-24L CLK  
 SERIES 167 24-5-24L CC  
 STD. 7° POS. TRACK FOR FULL LENGTH. PITCH - 3"  
 DISCHARGE HEIGHT - 4-9/16"



	SERIES 195
	24-5-24-LN CLK

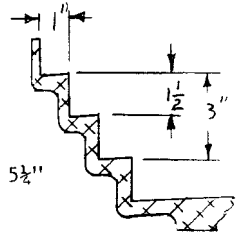
STD. 30° NEG. STARTS 180° FROM TANGENCY & IS 30° NEG. AT 90° FROM TANGENCY  
 PITCH - 3"  
 DISCHARGE HEIGHT - 3-11/16"

# 24 MULTIPLE TRACK BOWLS

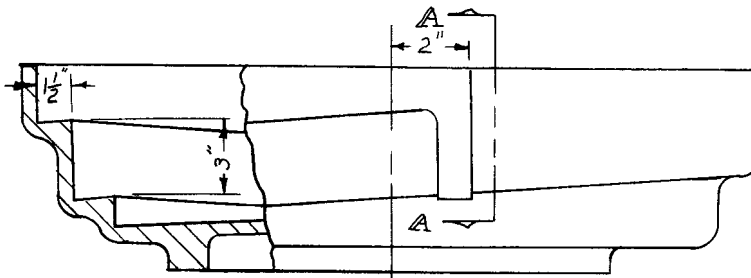


SERIES 59 24-5-16-2 CC  
 SERIES 136 24-5-16-2 CLK

STD. 7° POS. TRACH FOR FULL LENGTH OF TRACKS.  
 PITCH - 3"  
 DISCHARGE HT. OF TOP TRACK - 5½"

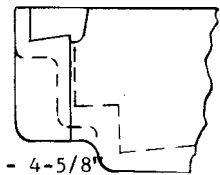


## 24 BOWLS



SERIES 63 24-5-24 CC  
 SERIES 64 24-5-24 CLK

STD. 7° POS. TRACK.  
 PITCH - 3"  
 DISCHARGE HT. - 4-5/8"



SERIES 65 24-5-24-N CC  
 SERIES 72 24-5-24-N CLK  
 TRACK IS 15° NEGATIVE FOR LAST 18" - BEGINS DROP TO NEG. 28" FROM DISCHARGE.  
 PITCH - 3"  
 DISCHARGE HEIGHT - 4-5/8"

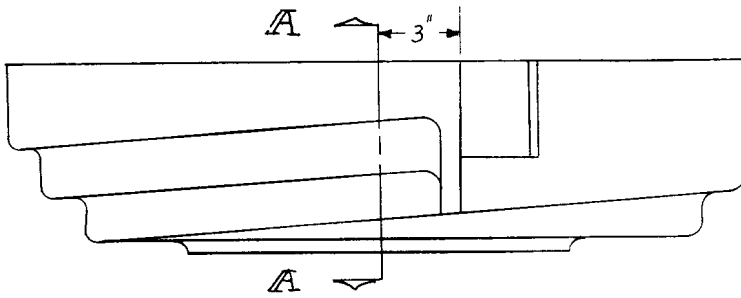
SERIES 77 24-5-24V CC  
 SERIES 84 24-5-24V CLK  
 120° "V" FORM FOR FULL LENGTH OF TRACK - CENTERLINE OF "V" IS 5/8" FROM WALL.  
 PITCH - 3"  
 DISCHARGE HEIGHT - 4-3/4"

SERIES 164 24-5-24-N60 CC  
 SERIES 165 24-5-24-N60 CLK  
 TRACK IS 60° NEGATIVE FOR LAST 50° - BEGINS ROLL-UP TO NEGATIVE 150° FROM DISCHARGE.  
 PITCH - 3"  
 DISCHARGE HEIGHT - 3½"

SERIES 225 24-5-24V CLK  
 SERIES 253 24-5-24V CC  
 70° POSITIVE ANGLE TRACK DEVELOPS INTO 120° INCLUDED ANGLE "V" FORM TRACK FOR 180° TO DISCHARGE.  
 PITCH - 3"  
 DISCHARGE HEIGHT - 4-9/16"

SERIES 249 24-5-24-L-C-N  
 SERIES 251 24-5-24-L-CC-N  
 1½" WIDE TRACK. TRACK WARPS TO 60° NEG. 90° FROM DISCHARGE TRACK IS PARALLEL TO BASE LAST 11".  
 PITCH - 3"

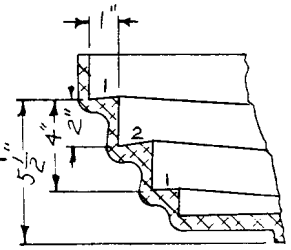
# 30" MULTIPLE TRACK BOWLS COUNTERCLOCKWISE



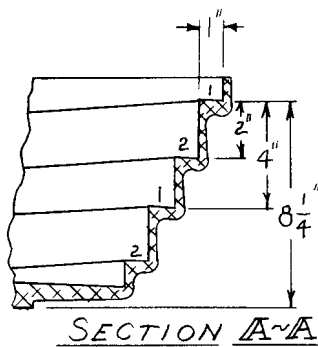
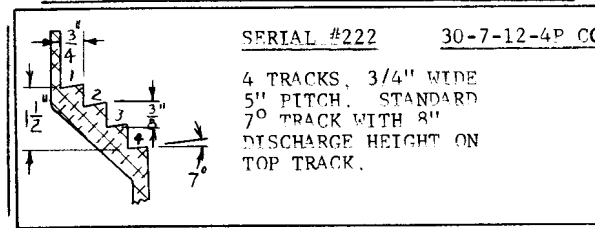
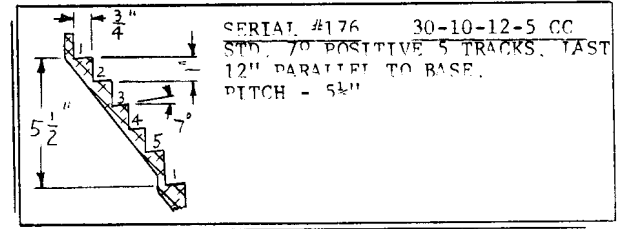
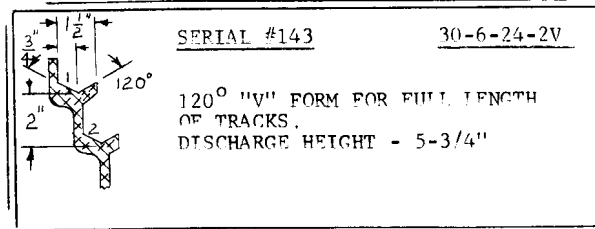
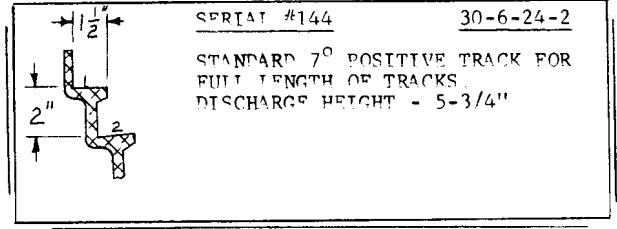
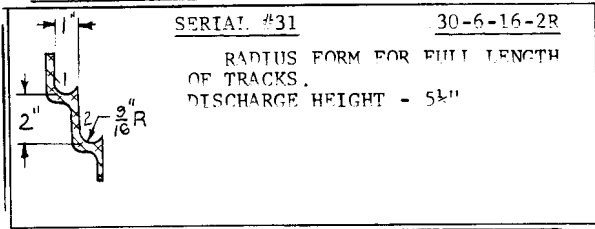
SERIAL #30

30-6-16-2

STANDARD 7° POSITIVE TRACK.



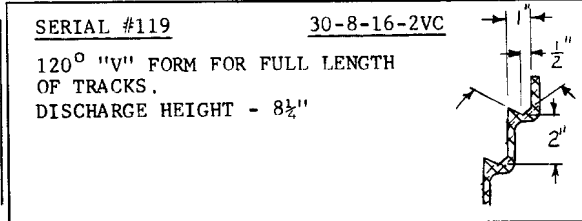
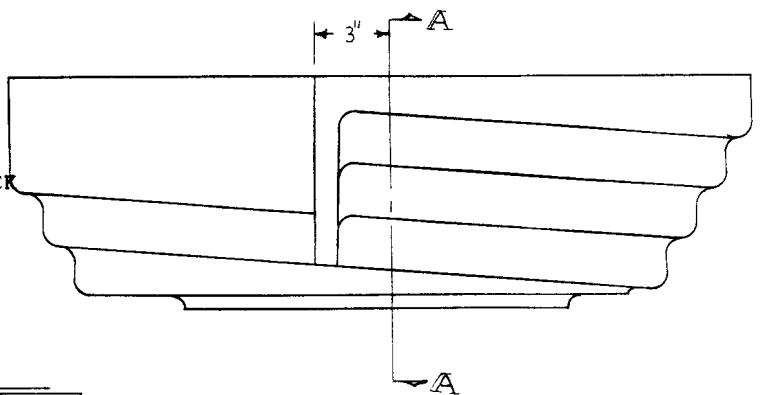
SECTION A-A



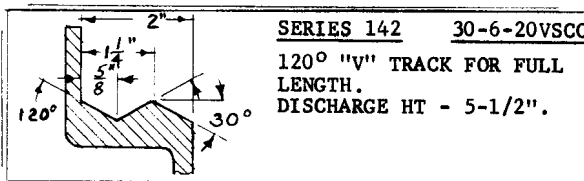
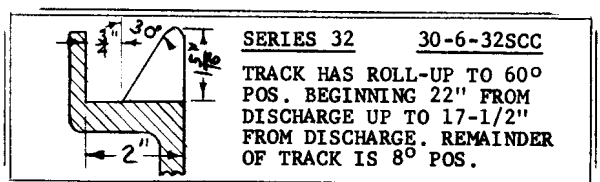
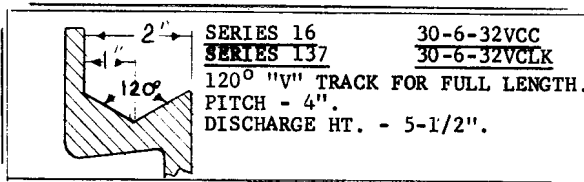
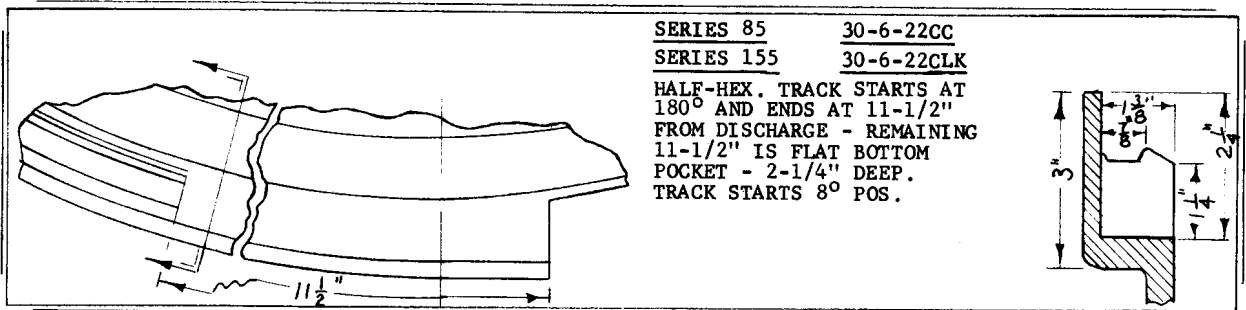
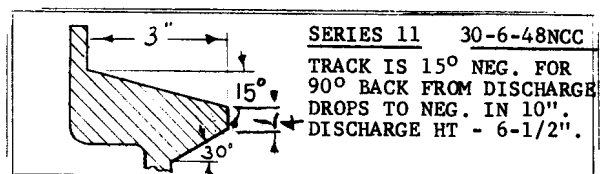
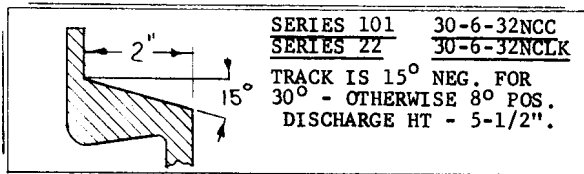
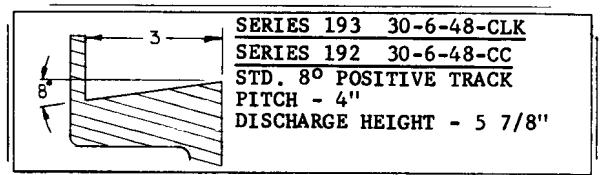
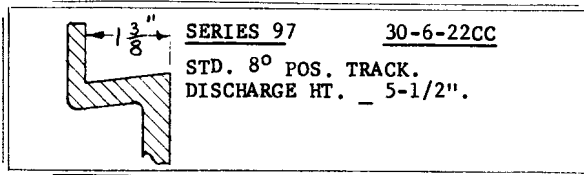
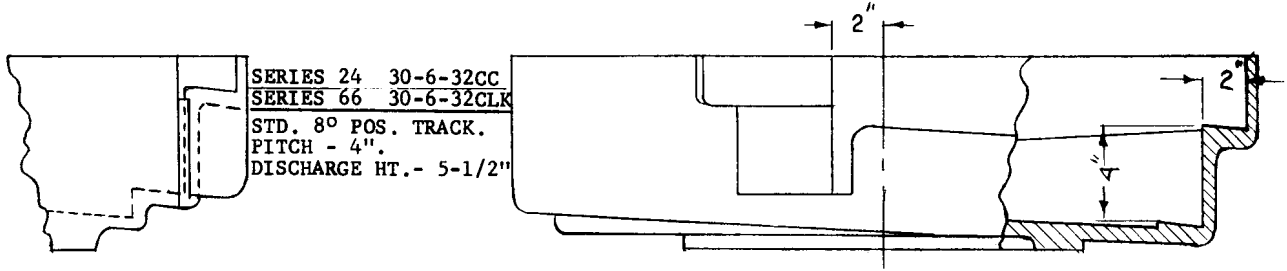
SERIAL #125

30-8-16-2C

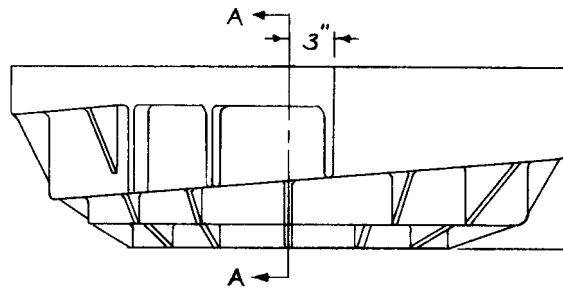
STANDARD 7° POSITIVE TRACK



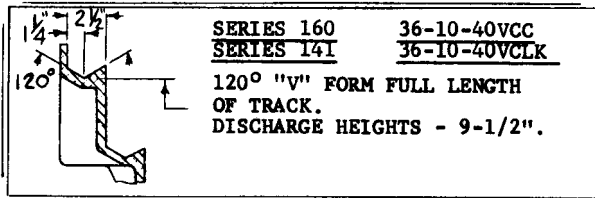
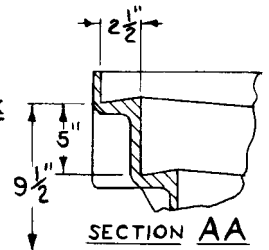
# 30" BOWLS



# 36" BOWLS



SERIES 161 36-10-40CC  
SERIES 149 36-10-40CLK  
STANDARD 7° POSITIVE  
TRACK.



VFC DIVISION - AUTOMATION DEVICES, INC.

## SYMBOLS

CC - Counterclockwise Rotation	P - Pocket Type Bowl	2 - 2 Track Bowl Design
CLK - Clockwise Rotation	R - Radius Form in Track	3 - 3 Track Bowl Design
L - Light Series Bowl	V - 120° "V" Track Form	4 - 4 Track Bowl Design
N - 15° Neg. Track Angle	V60 - 60° "V" Track Form	6 - 6 Track Bowl Design
N60 - 60° Neg. Track Angle	V90 - 90° "V" Track Form	4R - 4 Radiused Tracks

First group of numbers is bowl diameter in inches.

Second group of numbers is bowl depth in inches.

Third group of numbers is track width in sixteenths of an inch.

Fourth group of numbers only (if any) is code found in column 3 above.

Additional symbols (if any) are coded in columns 1 and 2 above.

Example - Series 143, 30-6-24-2-V-CC is a bowl 30" diameter, 6" deep, with a 1-1/2" wide track (24/16), dual track (column 3), each track having a 120° "V" form (column 2), counterclockwise rotation (column 1).