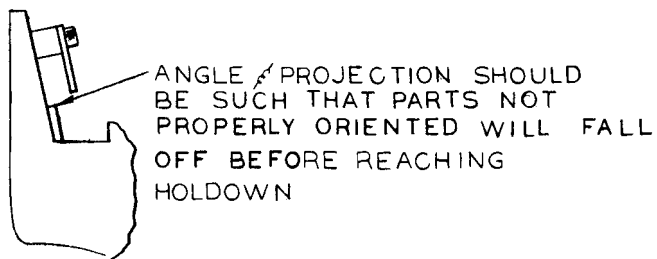
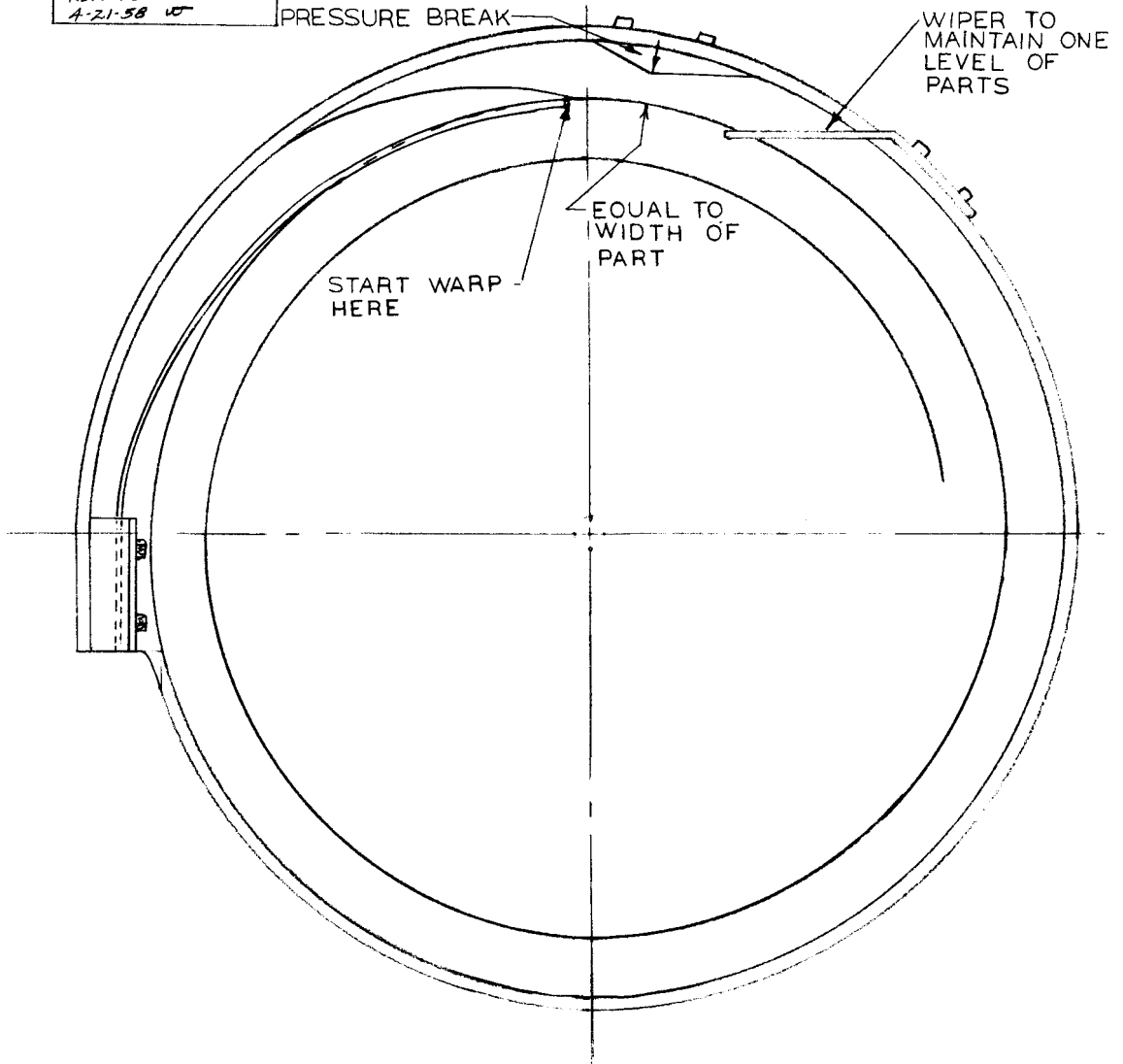
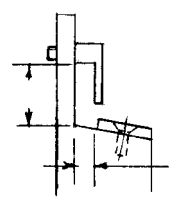
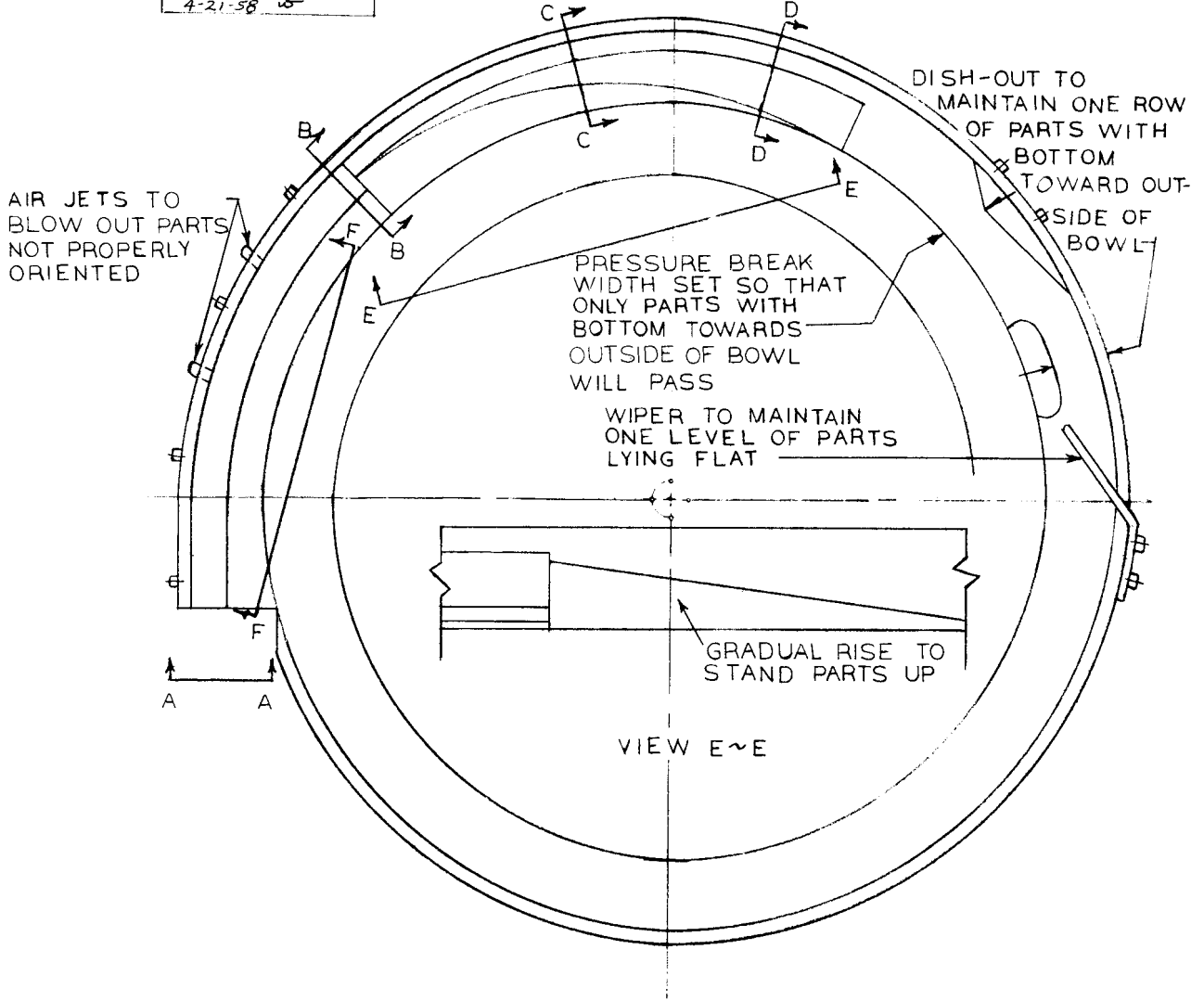


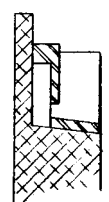
VIBRATORY FEEDER CO. AUTOMATION PARK, BOX AD FAIRVIEW, PA. 16415 PHONE 814/474-5561		CASE NO <b>31</b>	
DWN R.L.L. DATE 6/7/56 CHKD ✓ DATE 4-21-58 REVISED 4-21-58 ✓	SCALE SK NO 2034	ORIENTING BY CENTER OF GRAVITY	PART FED



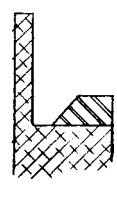
<b>VIBRATORY FEEDER CO</b> AUTOMATION PARK, BOX AD FAIRVIEW, PA, 16415 PHONE 814/474-5561		CASE NO <b>32</b>	
DWN DATE 6-14-56 CHK'D DATE 6-22-56 REVISED 4-21-58	R.L.L. SCALE SK. NO 2035	IRREGULAR FLAT PART	PART FED



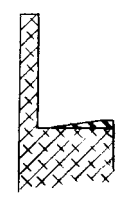
VIEW A~A



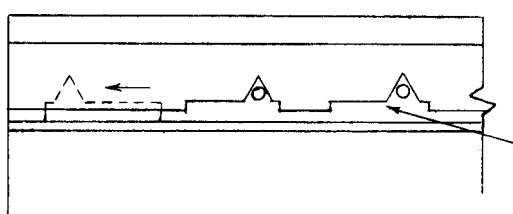
SECTION B~B



SECTION C~C



SECTION D~D

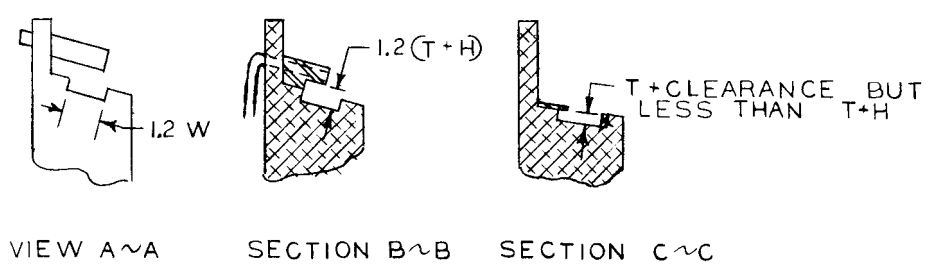
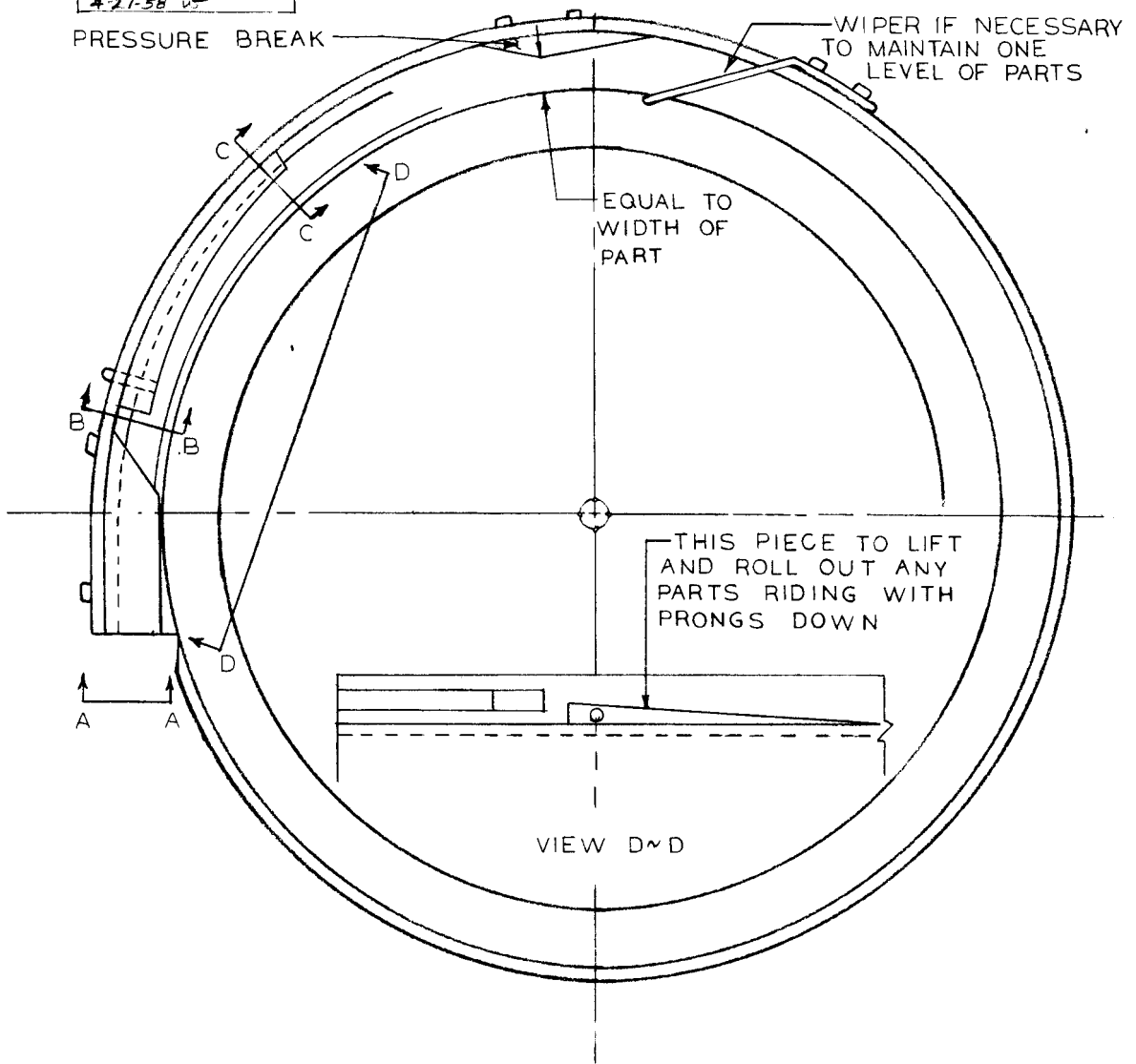


VIEW F~F

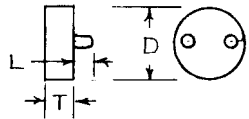
SILHOUETTE FORM SLIGHTLY LARGER THAN PART SIZE TO ALLOW AIR TO REJECT PARTS NOT PROPERLY ORIENTED

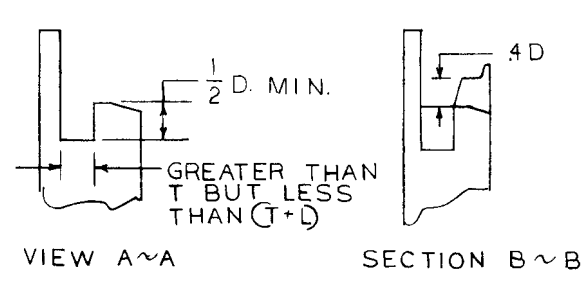
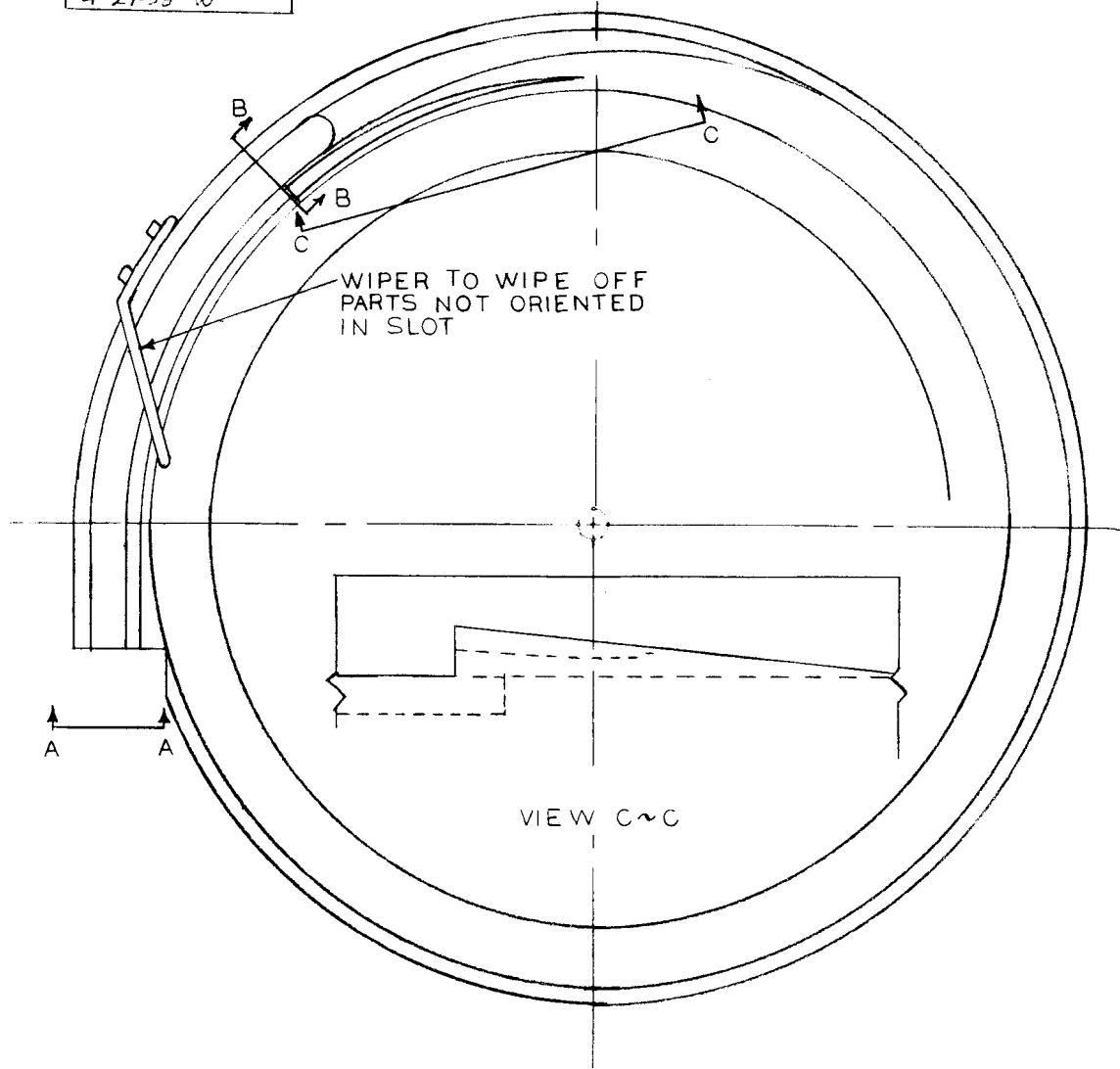
© 1966 BY VIBRATORY FEEDER CO.  
 A DIVISION OF  
 AUTOMATION DEVICES, INC.

<b>VIBRATORY FEEDER CO.</b> AUTOMATION PARK, BOX AD FAIRVIEW, PA, 16415 PHONE 814/474-5561		CASE NO <b>33</b>	
DWN DATE 6-11-56 CHKD DATE 6-23-56 REVISED 4-21-58	R.L.L. ✓ ✓	SCALE SK NO 2036	PARTS WITH PRONGS OR TABS

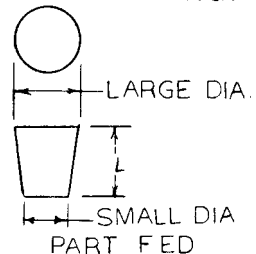


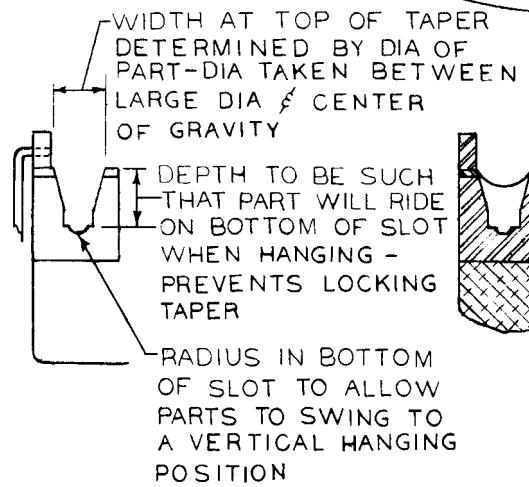
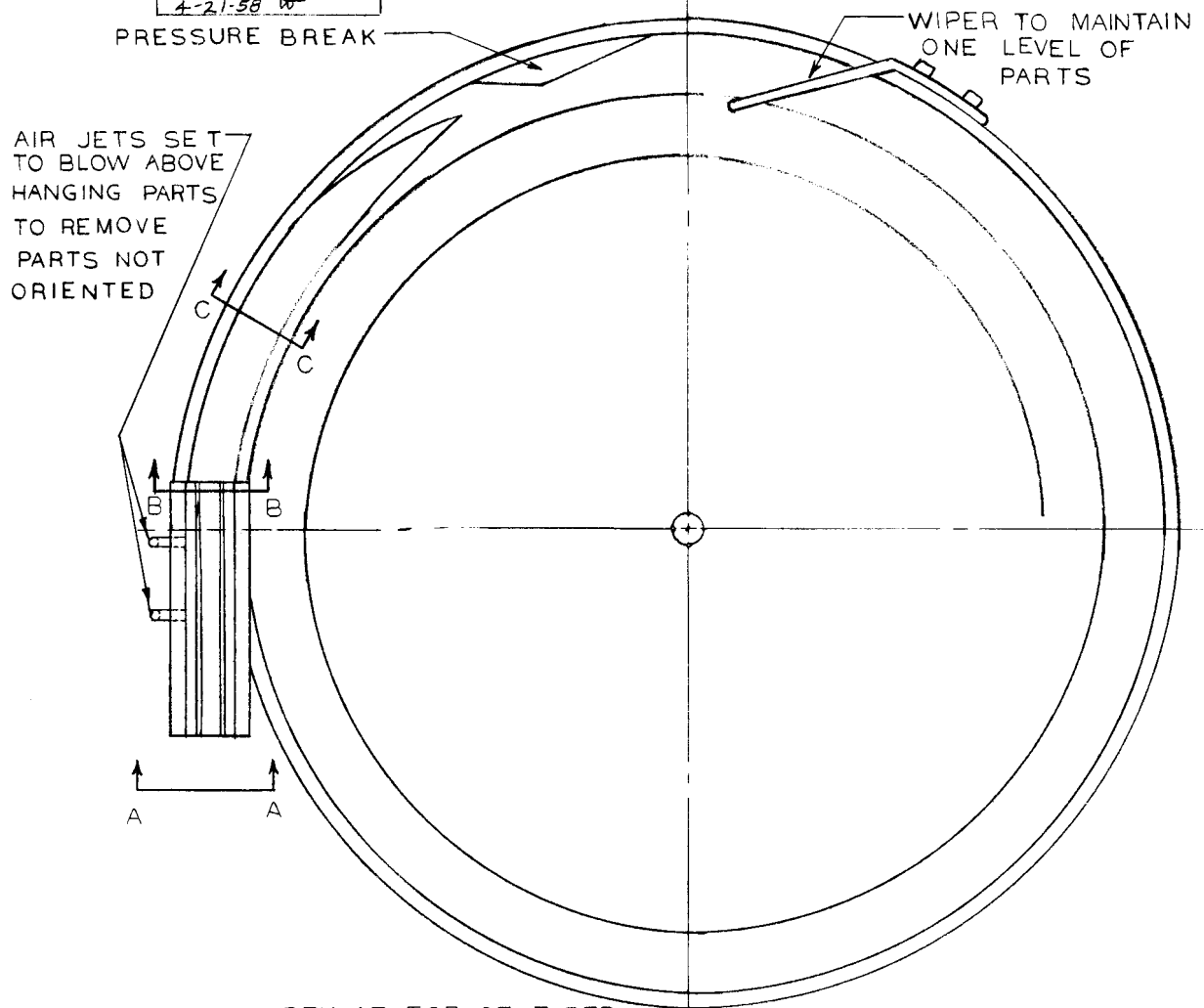
© 1966 BY VIBRATORY FEEDER CO.  
 A DIVISION OF  
 AUTOMATION DEVICES, INC

VIBRATORY FEEDER CO. AUTOMATION PARK, BOX AD FAIRVIEW, PA. 16415 PHONE 814/474-5561		CASE NO <b>34</b>	
DWN R.L.L. DATE 6-11-56 CHKD ✓ DATE 6-23-56 REVISED 4-21-58 ✓	SCALE ~ SK NO 2037	PARTS WITH PROJECTING PINS	PART FED



© 1966 BY VIBRATORY FEEDER CO.  
 A DIVISION OF  
 AUTOMATION DEVICES, INC

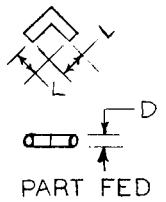
<b>VIBRATORY FEEDER CO.</b> AUTOMATION PARK, BOX AD FAIRVIEW, PA. 16415 PHONE 814/474-5561		CASE NO <b>35</b>	
DWN. DATE 6-12-56	R.L.L. 6-12-56	SCALE $\sim$	CONE OR A FRUSTUM OF A CONE
CHK'D DATE 6-23-56	SK NO 2038		
REVISED 4-21-58			

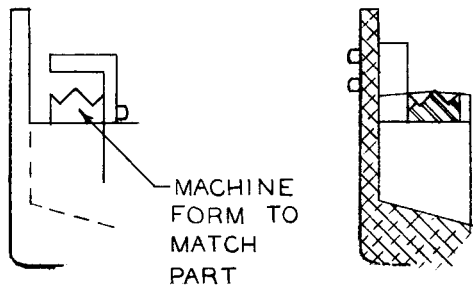
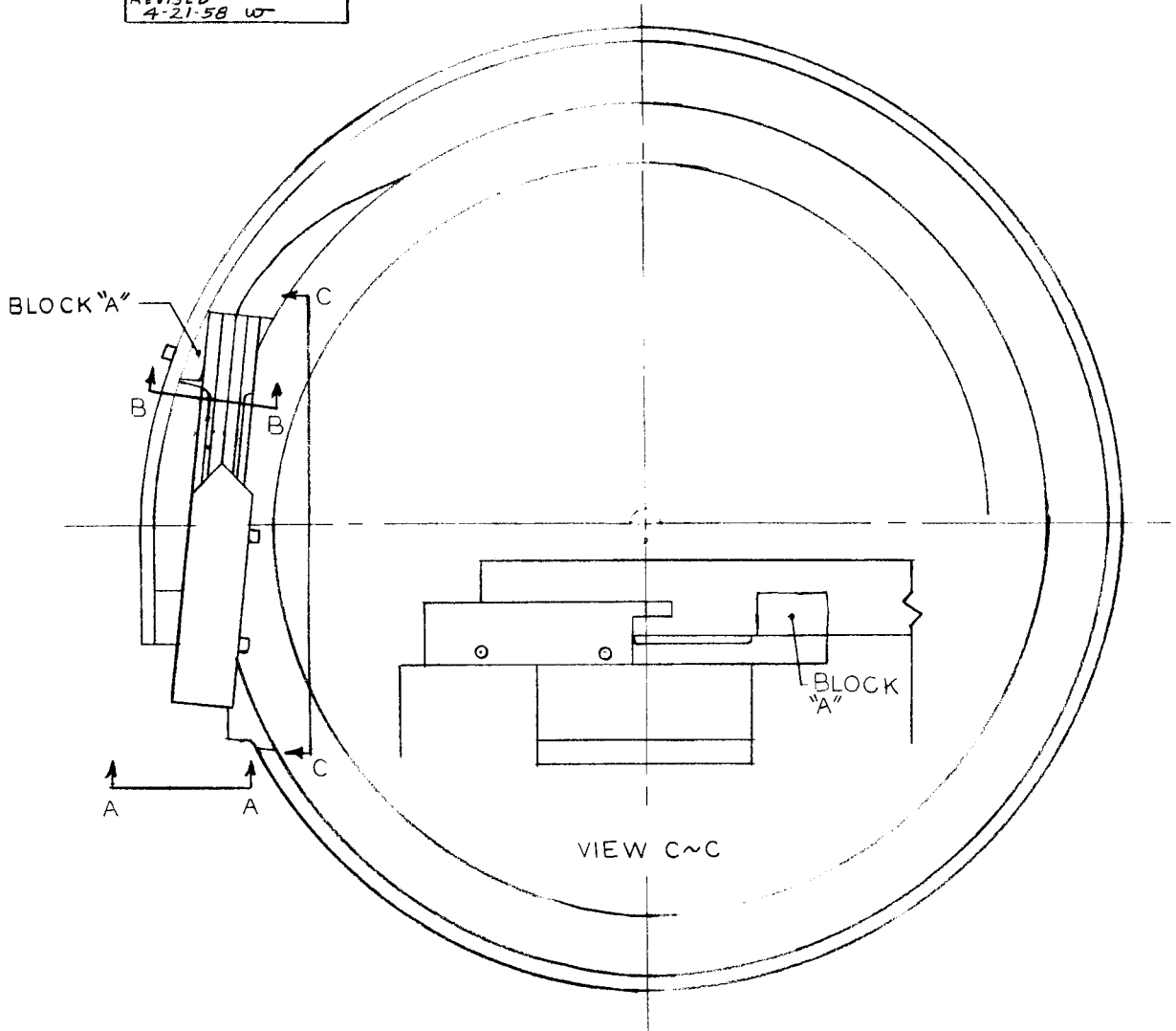


SECTION C~C

VIEW A~A

SECTION B~B

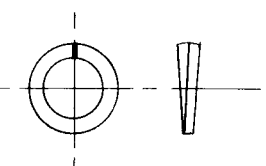

VIBRATORY FEEDER CO. AUTOMATION PARK, BOX AD FAIRVIEW, PA. 16415 PHONE 814/474-5561		CASE NO. <b>36</b>	
DWN. R.L.L. DATE 6-13-56 CHKD. W DATE 6-23-56 REVISED 4-21-58 W	SCALE ~ SK. NO. 2039	ELBOWS	

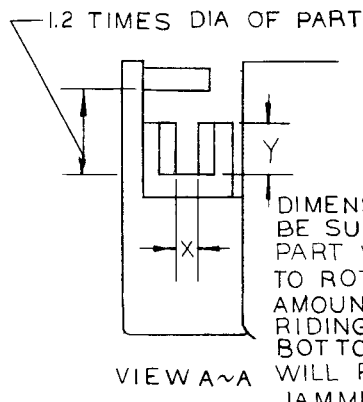
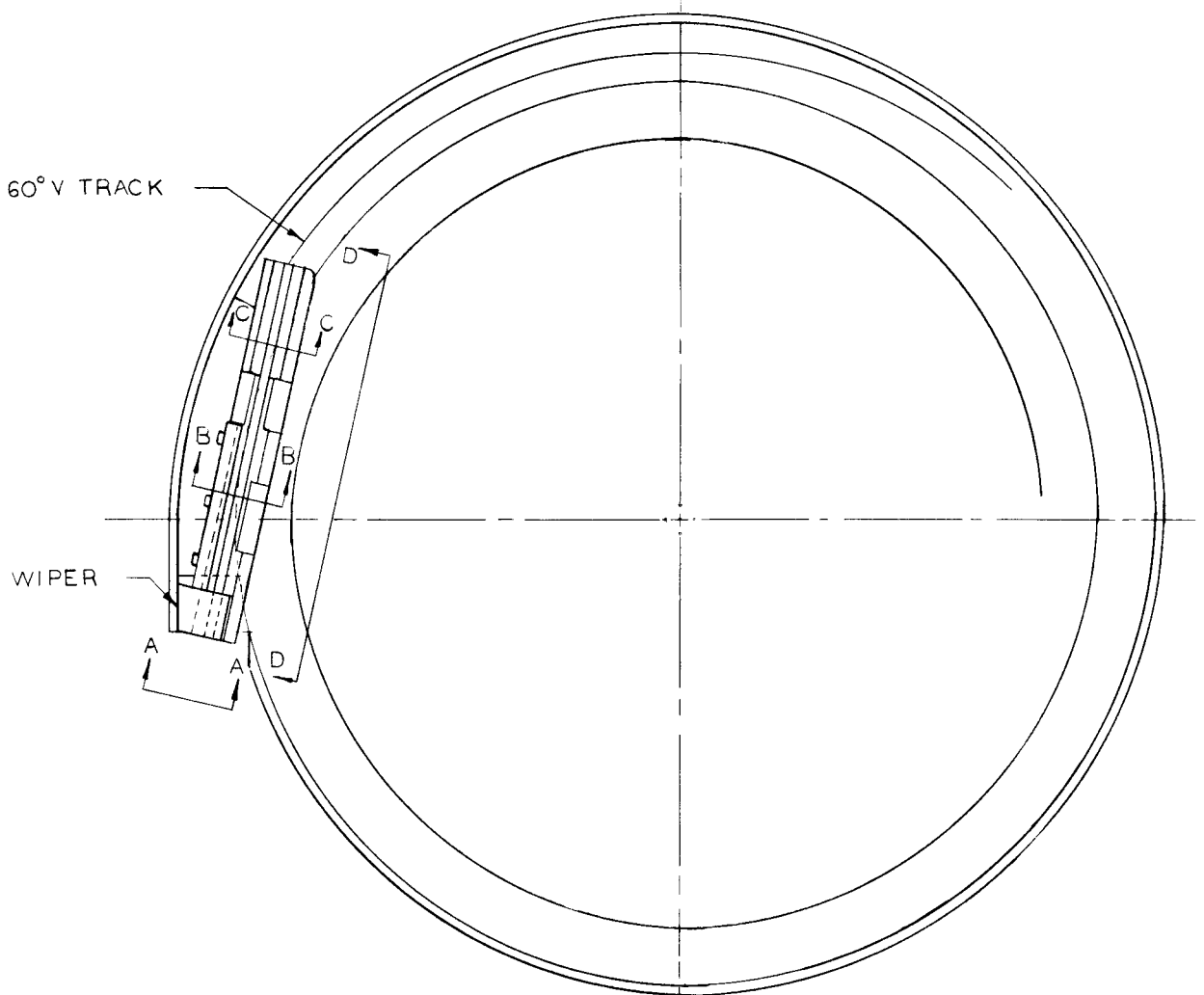


VIEW A~A

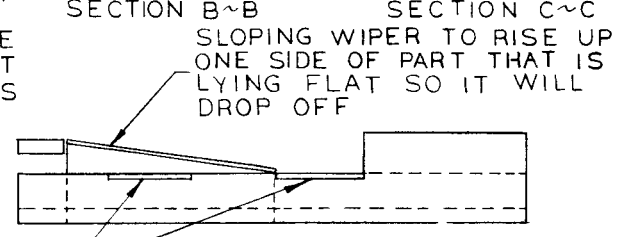
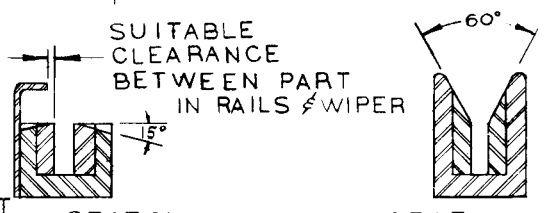
SECTION B~B

NOTE: BLOCK "A" TO CHANGE  
 DIRECTION OF FLOW ↗  
 DIVERT PARTS ONTO  
 RAIL

<b>VIBRATORY FEEDER CO.</b> AUTOMATION PARK, BOX AD FAIRVIEW, PA. 16415 PHONE 814/474-5561		CASE NO <b>37</b>	
DWN DATE 1-31-57 CHKD DATE 5-2-58	J.P.R. 1-31-57 W	SCALE  SK NO 2040	LOCK WASHERS MUST BE NON- INTERLOCKING TYPE  PART FED

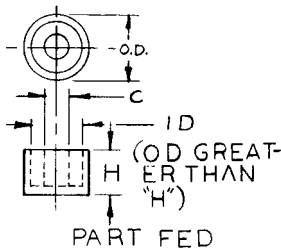


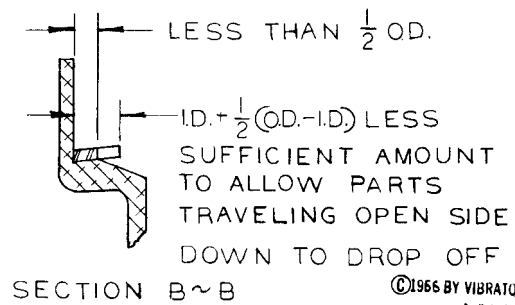
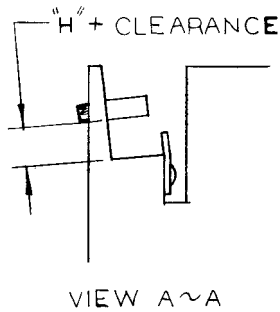
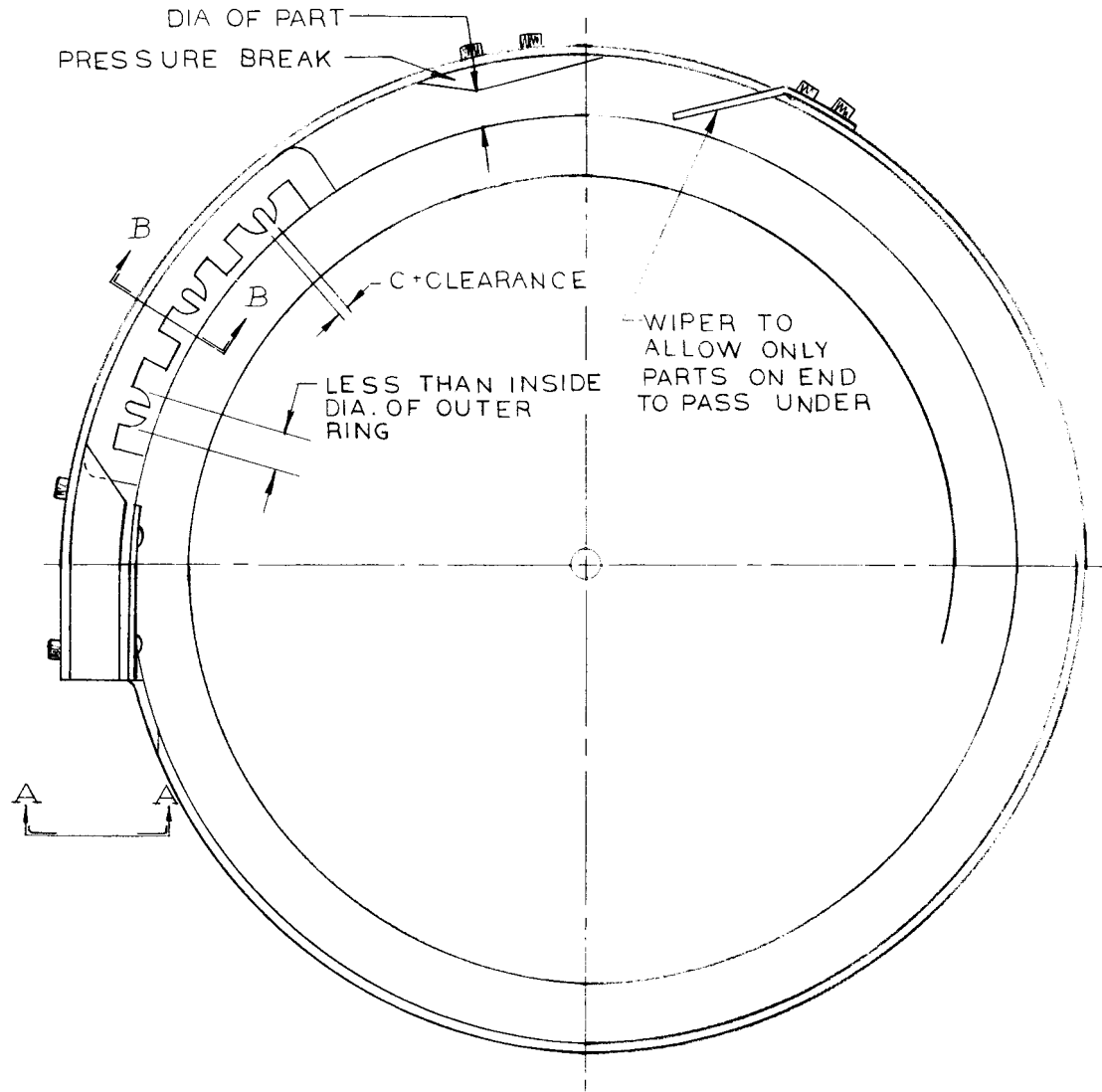
DIMENSION X & Y MUST BE SUCH THAT THE PART WILL BE FREE TO ROTATE A SLIGHT AMOUNT DUE TO ITS RIDING ON THE BOTTOM. THIS WILL PREVENT JAMMING



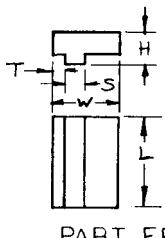

2 15° NEG SPILLOFFS

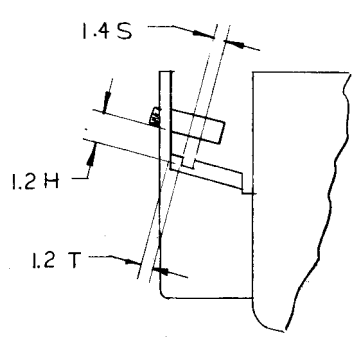
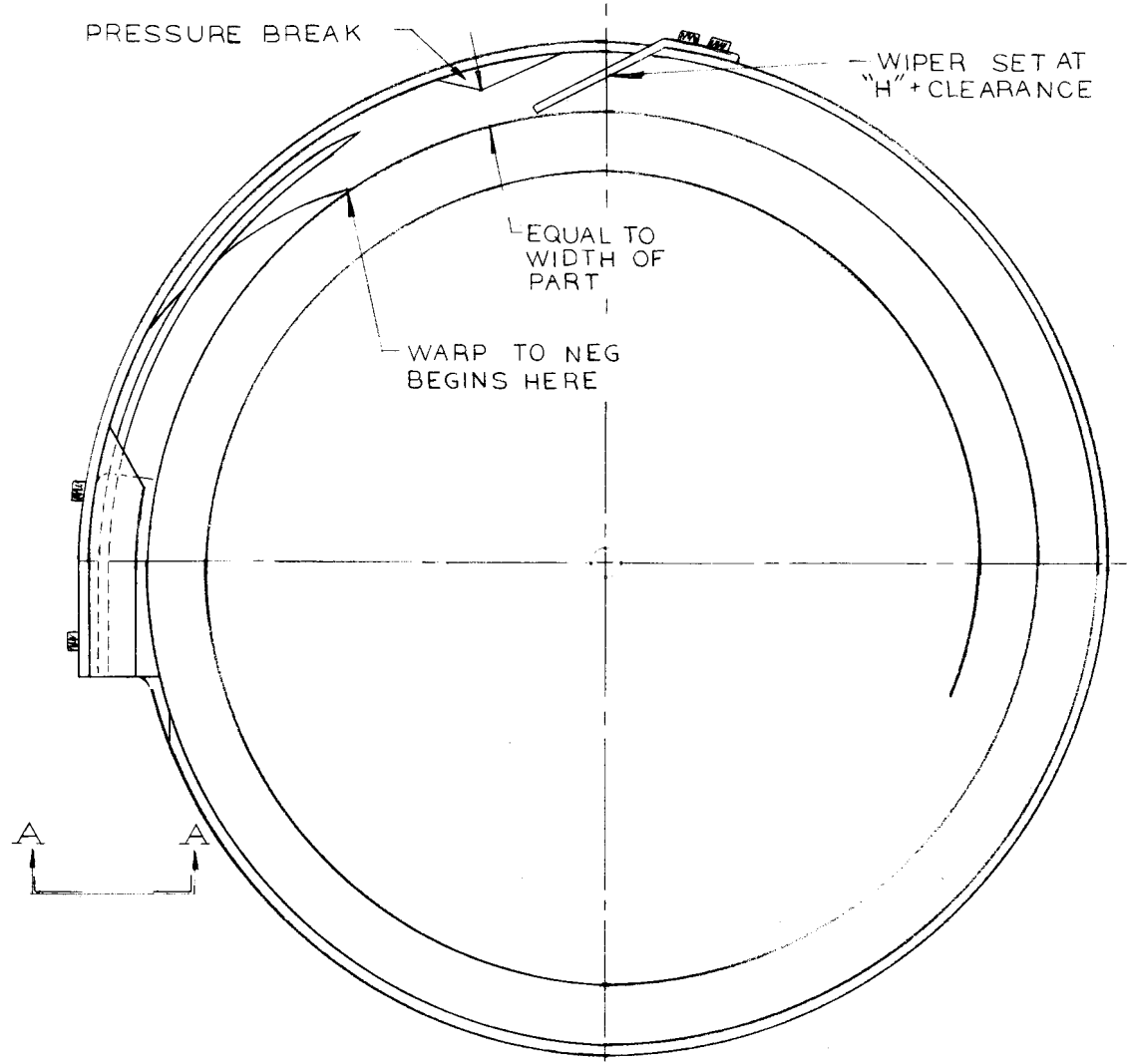
©1966 BY VIBRATORY FEEDER CO.  
 A DIVISION OF  
 AUTOMATION DEVICES, INC.

<b>VIBRATORY FEEDER COMPANY</b> AUTOMATION PARK, BOX A D FAIRVIEW, PA. 16415 PHONE 814/474-5561		CASE NO <b>38</b>	
DWN DATE 9-17-57 CHKD DATE 5-2-58	J.P.R. W	SCALE $\sim$ SK NO 2041	PARTS HAVING A GROOVE ON ONE FACE



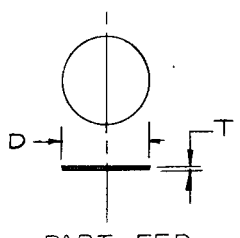
©1966 BY VIBRATORY FEEDER CO.  
 A DIVISION OF  
 AUTOMATION DEVICES, INC.

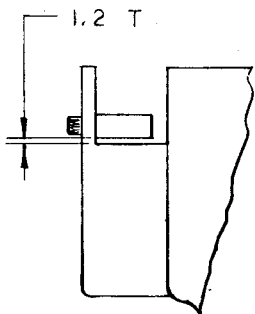
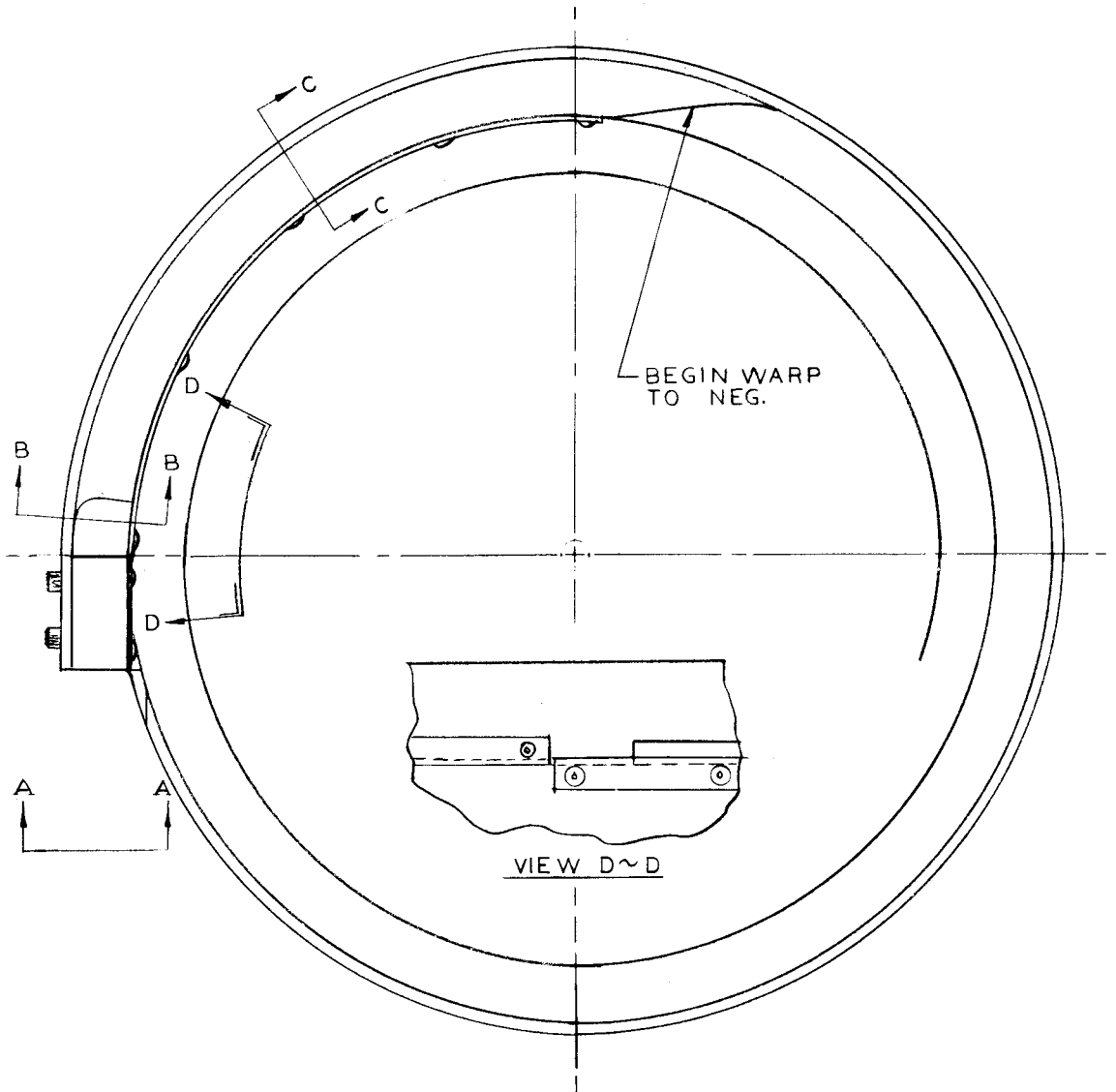
<b>VIBRATORY FEEDER COMPANY</b> AUTOMATION PARK, BOX AD FAIRVIEW, PA. 16415 PHONE 814/474-5561		CASE NO <b>39</b>	
DWN J.P.R. DATE 9-17-57 CHKD W DATE 5-2-58	SCALE  SK NO 2042	PART HAVING AN OFF-SET KEY ON ONE SIDE	



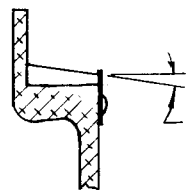
VIEW A~A

©1966 BY VIBRATORY FEEDER CO.  
 A DIVISION OF  
 AUTOMATION DEVICES, INC.

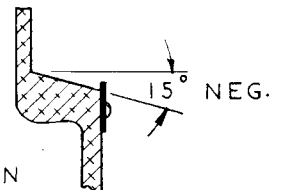
VIBRATORY FEEDER COMPANY AUTOMATION PARK, BOX AD FAIRVIEW, PA. 16415 PHONE 814/474-5561		CASE NO <b>40</b>	
DWN DATE 9-17-57 CHKD DATE 5-2-58	J.P.R. SCALE ~ SK NO 2043	VERY THIN DISCS FLAT WASHERS	PART FED



VIEW A~A



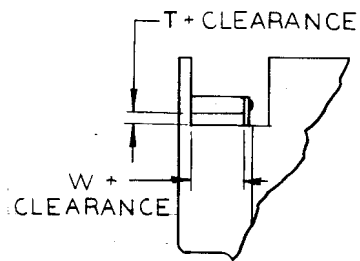
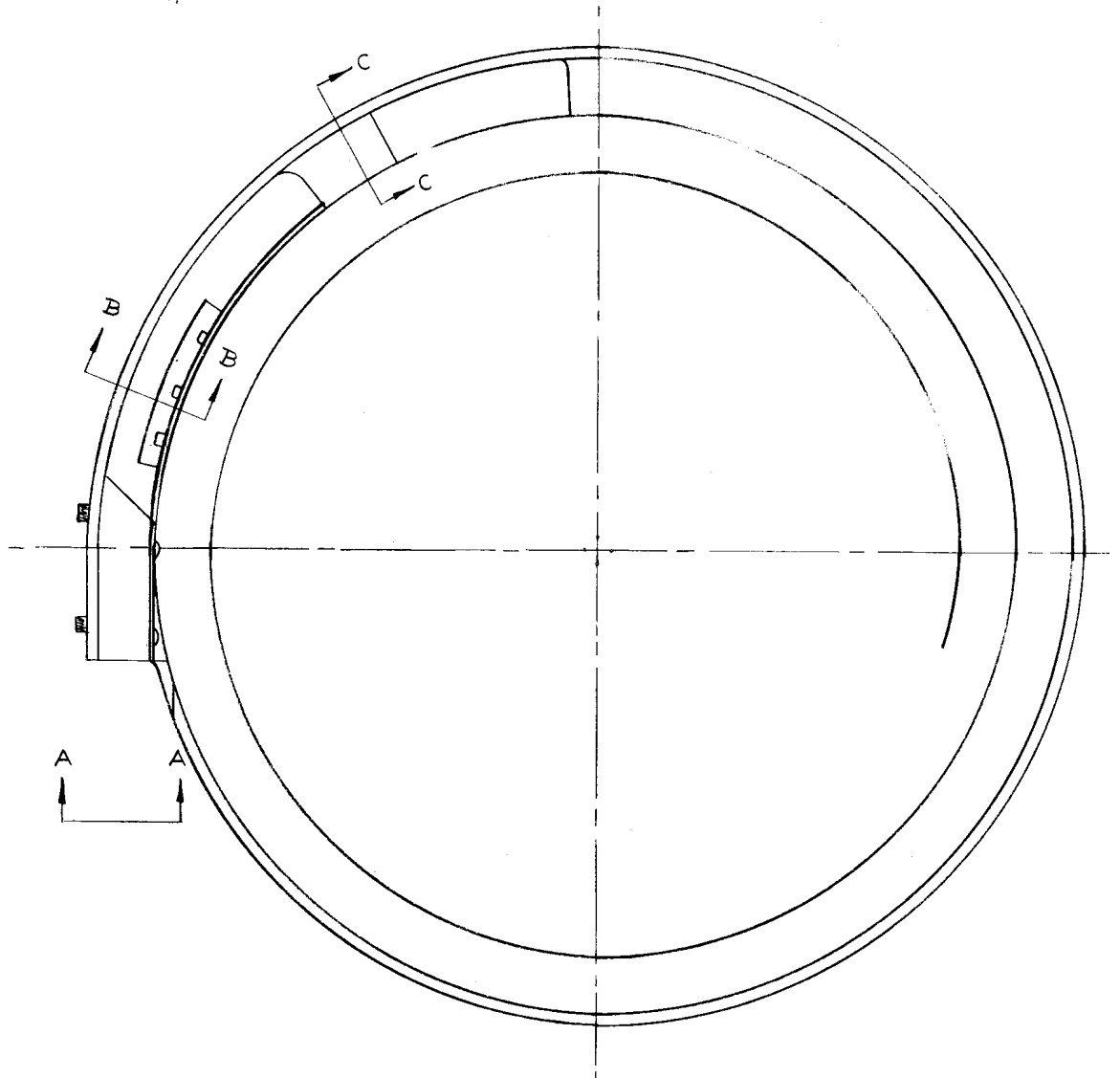
SECTION B~B



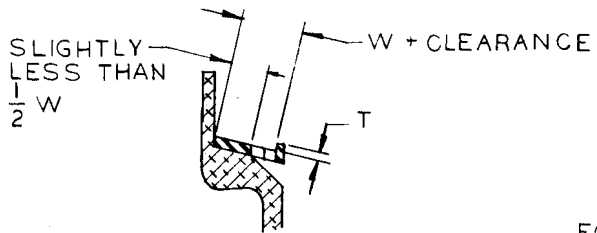
SECTION C~C

©1966 BY VIBRATORY FEEDER CO.  
 A DIVISION OF  
 AUTOMATION DEVICES, INC.

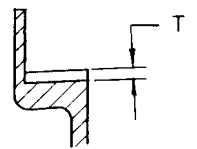
<b>VIBRATORY FEEDER COMPANY</b> AUTOMATION PARK, BOX AD FAIRVIEW, PA. 16415 PHONE 814/474-5561		CASE NO <b>41</b>	
DWN JPR DATE 9-17-57 CHK'D W DATE 5-2-58	SCALE $\sim$ SK NO 2044	"U" SHAPED PART LENGTH GREATER THAN WIDTH	



VIEW A~A



SECTION B~B

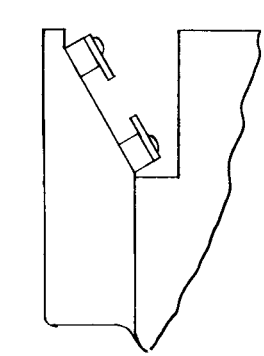
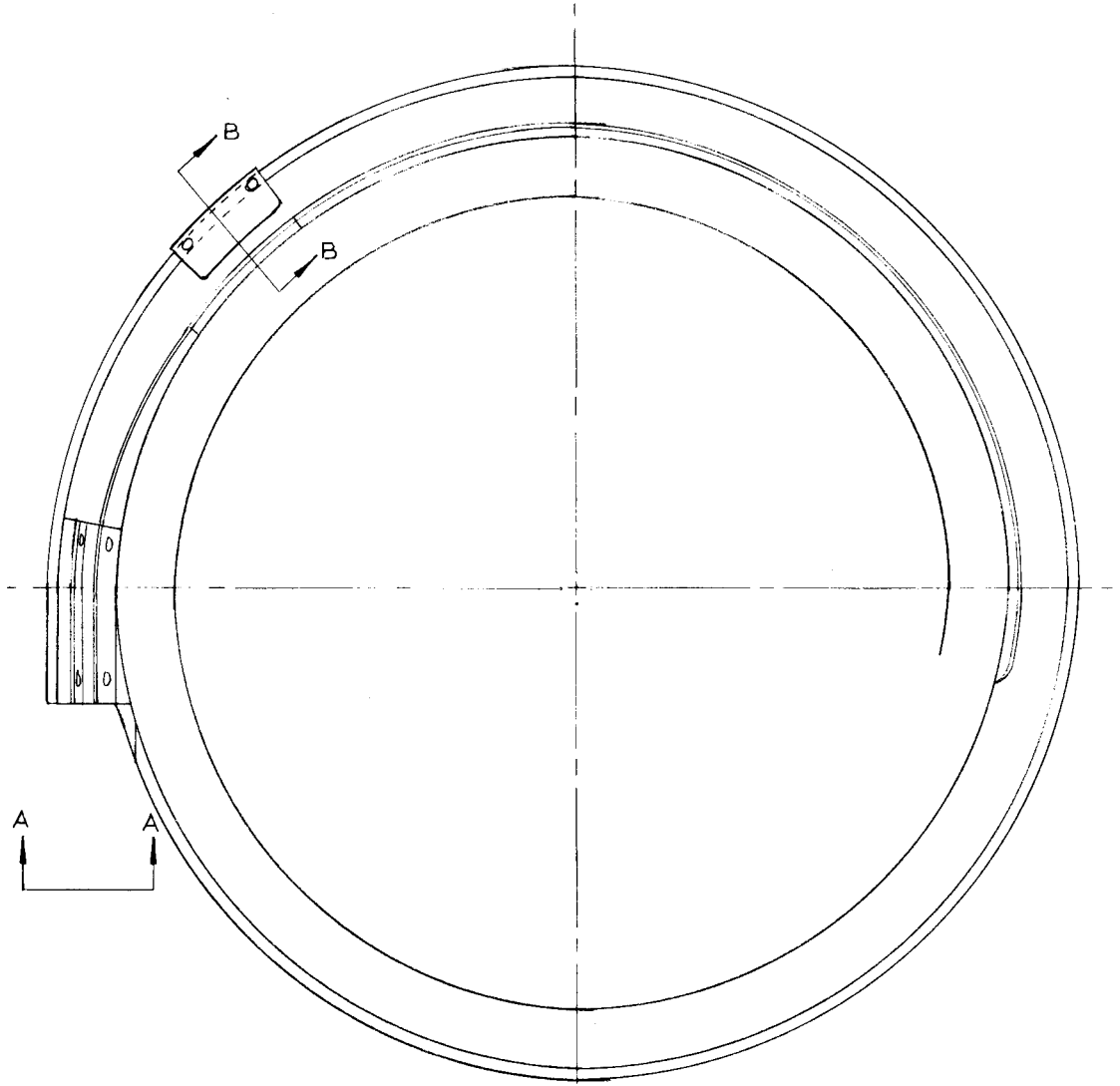


FOR PRESSURE BREAK

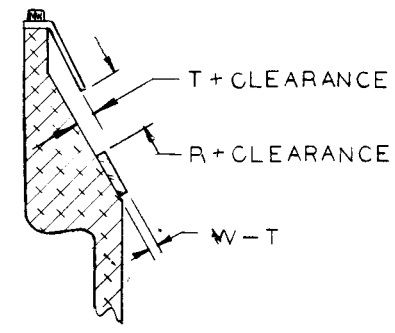
SECTION C~C

©1966 BY VIBRATORY FEEDER CO.  
 A DIVISION OF  
 AUTOMATION DEVICES, INC.

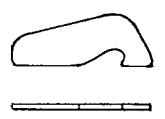
VIBRATORY FEEDER COMPANY AUTOMATION PARK, BOX AD FAIRVIEW, PA. 16415 PHONE 814/474-5561		CASE NO. <b>42</b>	
DWN JPR DATE 9-18-57 CHK'D W DATE 5-2-58	SCALE ~ SK. NO. 2045	SQUARE PART WITH PROJECTION ON ONE FACE	PART FED

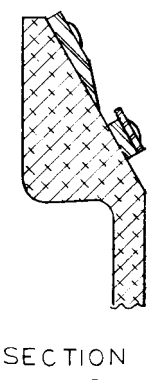
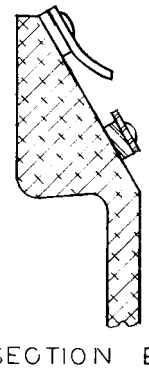
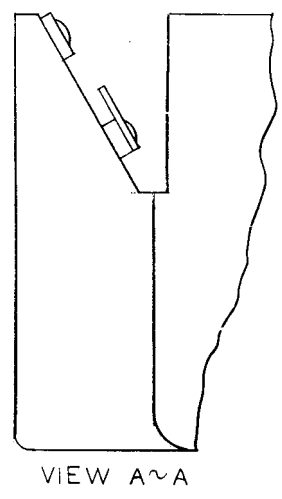
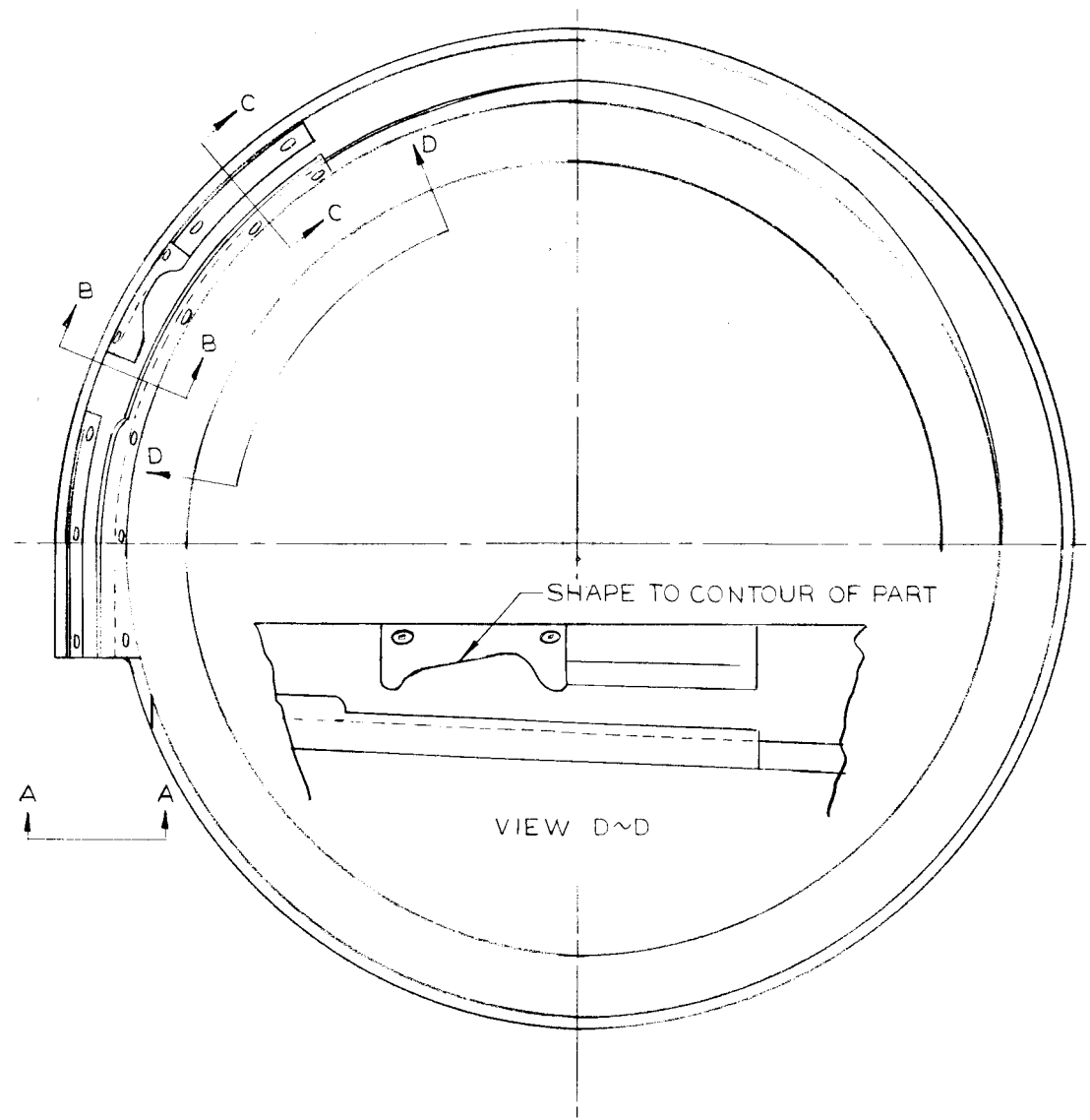


VIEW A~A

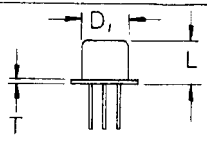
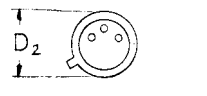


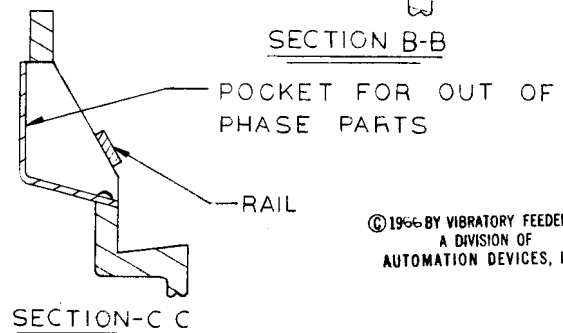
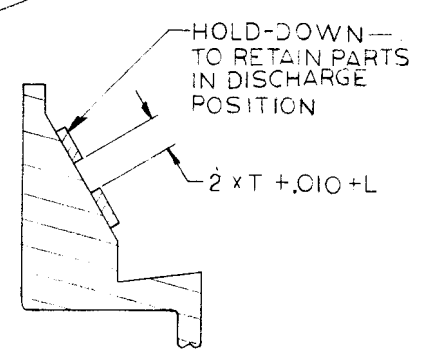
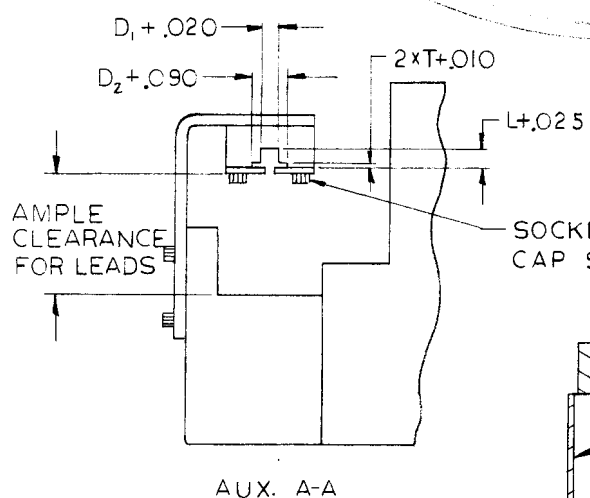
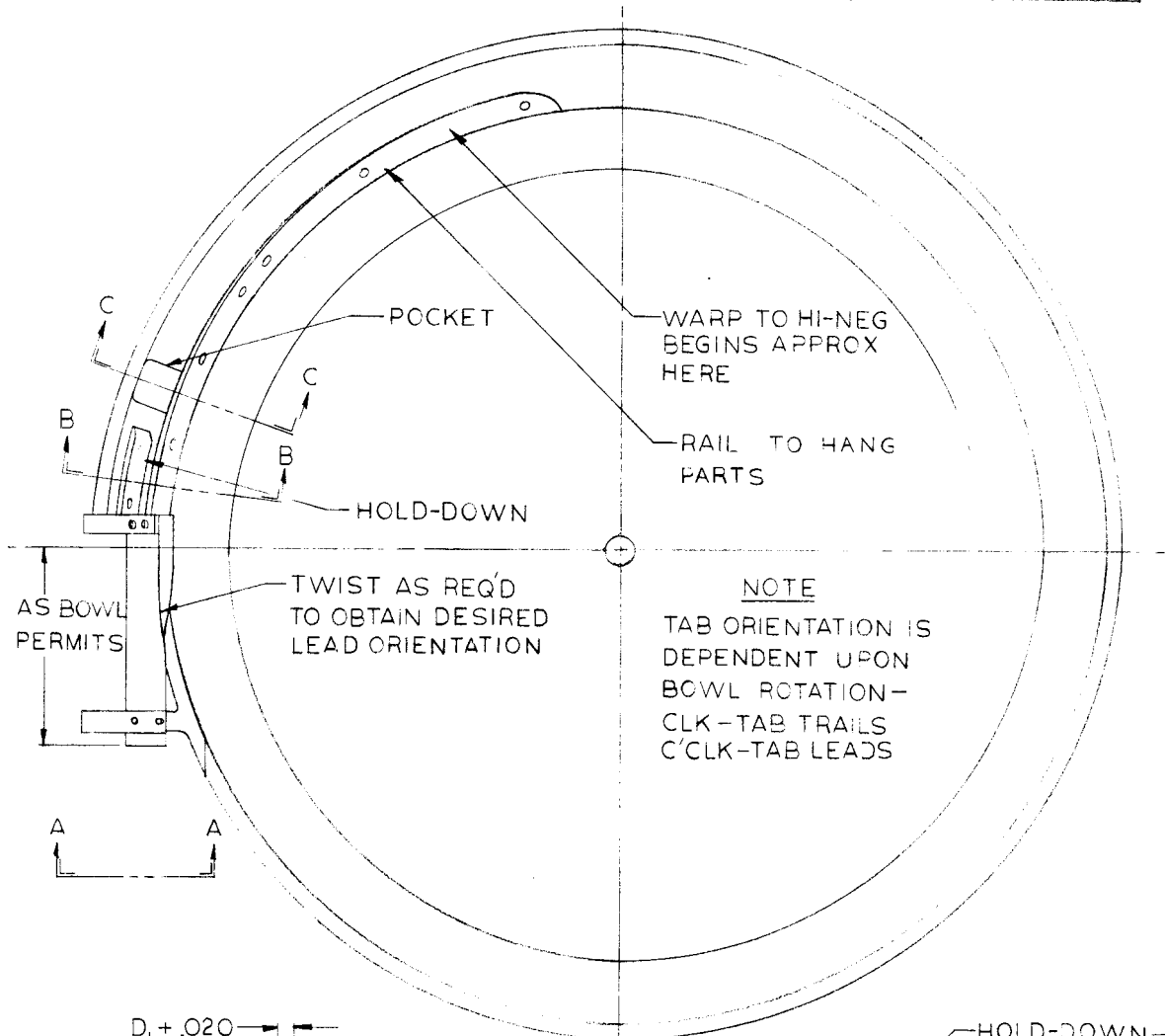
SECTION B~B

<b>VIBRATORY FEEDER COMPANY</b> AUTOMATION PARK, BOX AD FAIRVIEW, PA. 16415 PHONE 814/474-5561		CASE NO. <b>43</b>	
DWN DATE CHKD DATE	JPR 9-18-57 W 5-2-58	SCALE ~ SK. NO. 2046	IRREGULAR SHAPED PART PART FED

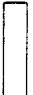



©1966 BY VIBRATORY FEEDER CO.  
 A DIVISION OF  
 AUTOMATION DEVICES, INC.

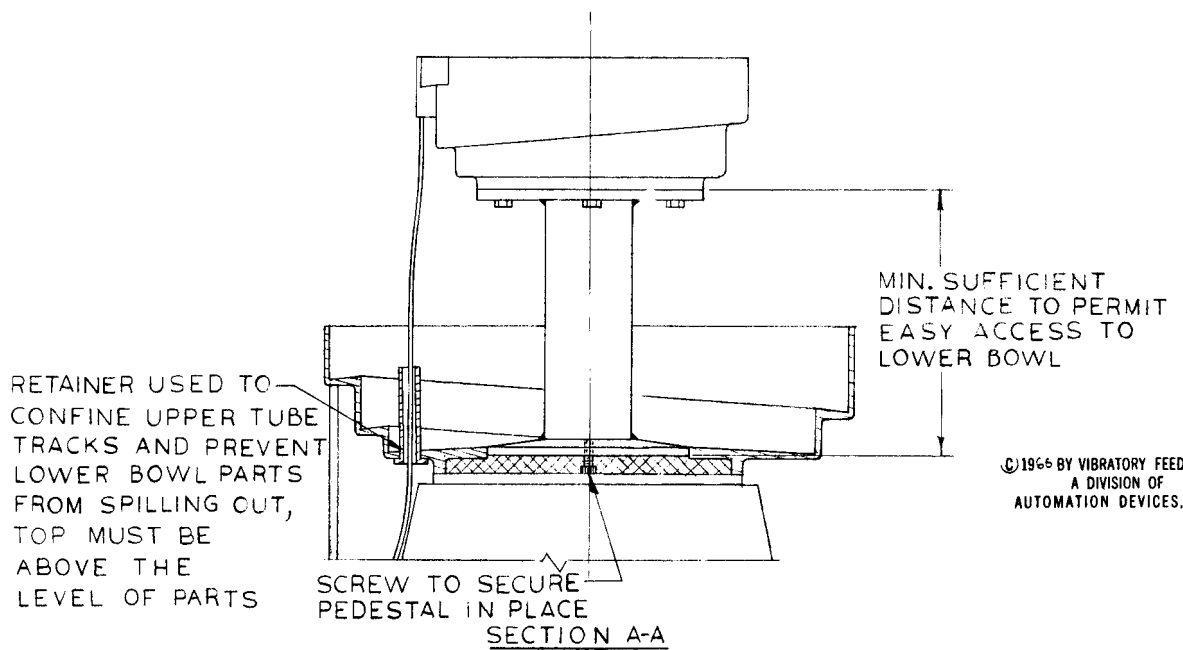
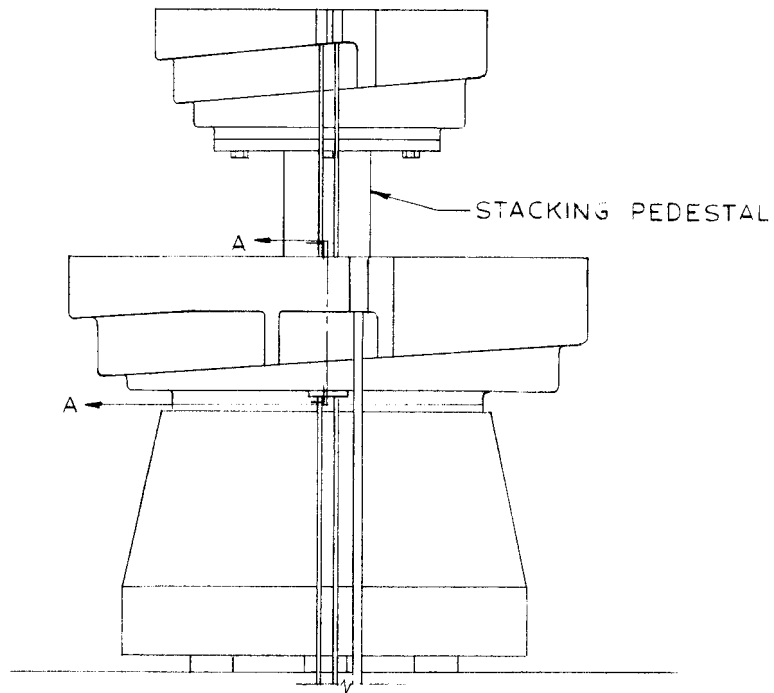
<b>VIBRATORY FEEDER COMPANY</b> AUTOMATION PARK, BOX AD FAIRVIEW, PA. 16415 PHONE 814/474-5561		CASE NO. <b>44</b>	
DWN <i>Rjm</i> DATE 12-7-65 CHK'D <i>[Signature]</i> DATE 5-1-66	SCALE - $\sim$ SK. NO. 2047	TRANSISTORS IN HI-NEG BOWL	 PART FED



© 1966 BY VIBRATORY FEEDER CO.  
 A DIVISION OF  
 AUTOMATION DEVICES, INC.

VIBRATORY FEEDER COMPANY AUTOMATION PARK, BOX AD FAIRVIEW, PA. 16415 PHONE 814/474-5561		CASE NO. <b>45</b>	   PART FED
DWN Rgm DATE 5-18-66 CHKD @ DATE 5-1-66	SCALE — ~  SK. NO. 2053	STACKED BOWLS	

NOTE  
 BOWLS ARE SHOWN USED IN  
 CONJUNCTION WITH PIN FEEDERS  
 (CASE 46)—THIS APPLICATION ALSO  
 IDEAL FOR OTHER CASES



©1966 BY VIBRATORY FEEDER CO.  
 A DIVISION OF  
 AUTOMATION DEVICES, INC.