

Automation Devices, Inc.

MODEL 8650 LEVEL CONTROL SWITCH Setup and Operating Instructions

Mount the level control switch at a convenient location next to the feeder bowl, as near as possible (but not beneath) to where the parts will be dropped into the bowl. This will assure even part distribution on the bottom of the bowl.

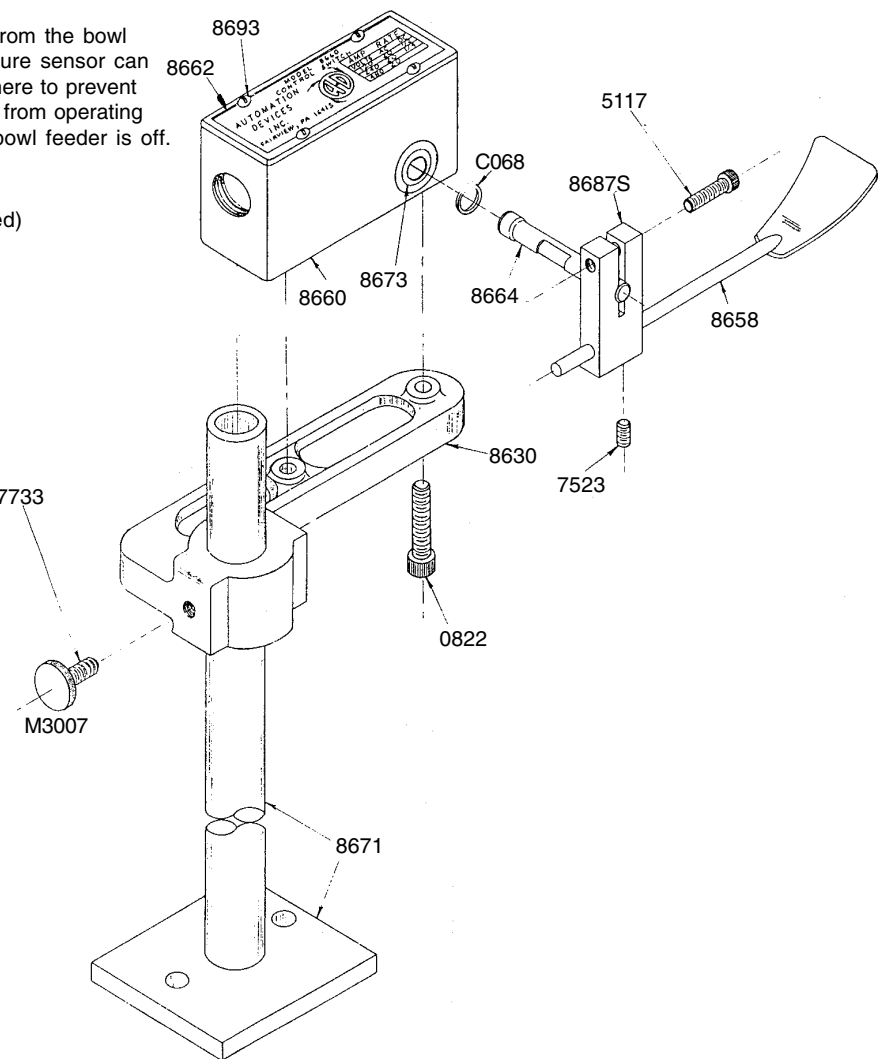
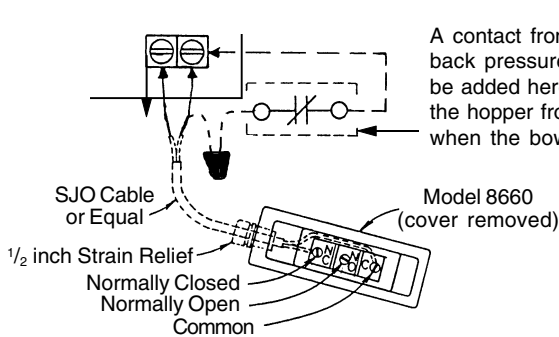
Set the switch bracket on the mounting post at such a height that

the switch and its operating members will clear the feeder. For optimum operation, the paddle arm should be on a 45° angle from the horizontal, yet far enough away from the bowl wall to prevent the paddle from interfering with part movement. Optimum feeder performance is obtained when the bottom of the feeder bowl is

covered with parts; however, this will vary from one application to another.

Adjust the operating shaft by loosening the cap screw (P/N 5117) on the paddle adjustor and rotating the shaft (P/N 8664) to a position where the switch contacts will start and stop the hopper vibrator (or other parts supplying device). The screw can then be tightened.

Hopper
Control Input Terminals
on a Model 6000 Controller



Parts List

Part Number	Quantity	Description
0822	2	1/4-20 x 1 SHCS
5117	1	10-32 x 3/4 SHCS
7523	1	10-32 x 1/4 SSS
7733	1	1/4-20 x 3/4 SHCS
8630	1	Bracket
8658	1	Paddle Arm
8660	1	Switch Assembly
8662	1	Nameplate
8664	1	Shaft/Cam
8671	1	Stand
8673	2	Bearing
8687S	1	Adjustor
8693	4	6-32 x 1/4 PRHMS
C068	2	Retaining Ring
M3007	1	Knob

BI01.01

Automation Devices, Inc.

7050 West Ridge Road
Fairview, PA 16415-2099

Phone: 814-474-5561

FAX: 814-474-2131 or 800-235-9382

Web Site: www.autodev.com E-mail: info@autodev.com