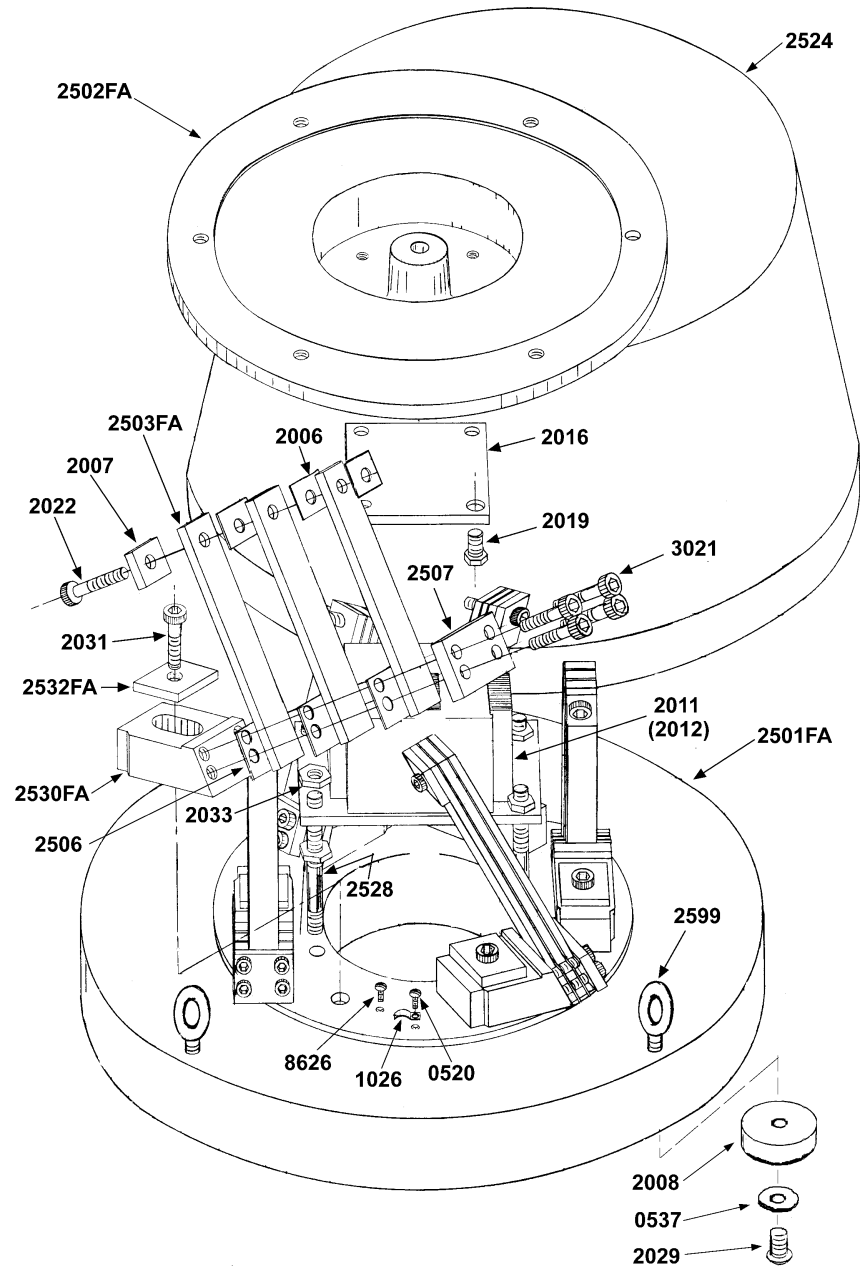


Automation Devices, Inc.

MODEL 25 BASE UNIT ASSEMBLY

Parts List		
Part No.	Qty	Description
0520	1	#10-32 X 3/8" RHMS
0537	3	3/8" Washer
1026	1	Cable Clamp
2006	*	Upper Spring Spacer
2007	6	Upper Spring Pad
2008	3	Foot
2011	1	120 Volt Coil
2012	optional	240 Volt Coil
2016	1	Armature
2019	4	3/8-16 X 3/4" HHCS
2022	6	1/2-13 X 2 1/2" SHCS
2029	3	3/8-16 X 1" RHMS
2031	6	1/2-13 X 3" SHCS
2033	8	1/2-13 Hex Nut
2501FA	1	Base Casting
2502FA	1	Top Casting
2503FA	*	Spring
2506	*	Lower Spring Spacer
2507	6	Lower Spring Pad
2524	1	Shell
2528	4	1/2-13 X 4 3/4" STUD
2530FA	6	Spring Block
2532FA	6	Spring Block Plate
2599	3	Eye Bolt
3021	24	3/8-16 X 2 1/2" SHCS
6938	1	Cord Assembly (Not shown)
8626	1	#10-32 x 3/8" Gnd Screw



* Quantity required depends on tuning for various bowl weights and operating frequency.

When ordering replacement parts, specify the *serial number* on the unit nameplate and/or stamped on the casting.

AE10.01

Automation Devices, Inc.

7050 West Ridge Road
Fairview, PA 16415-2099

Phone: 814-474-5561

FAX: 814-474-2131 or 800-235-9382

Web Site: www.autodev.com E-mail: info@autodev.com