

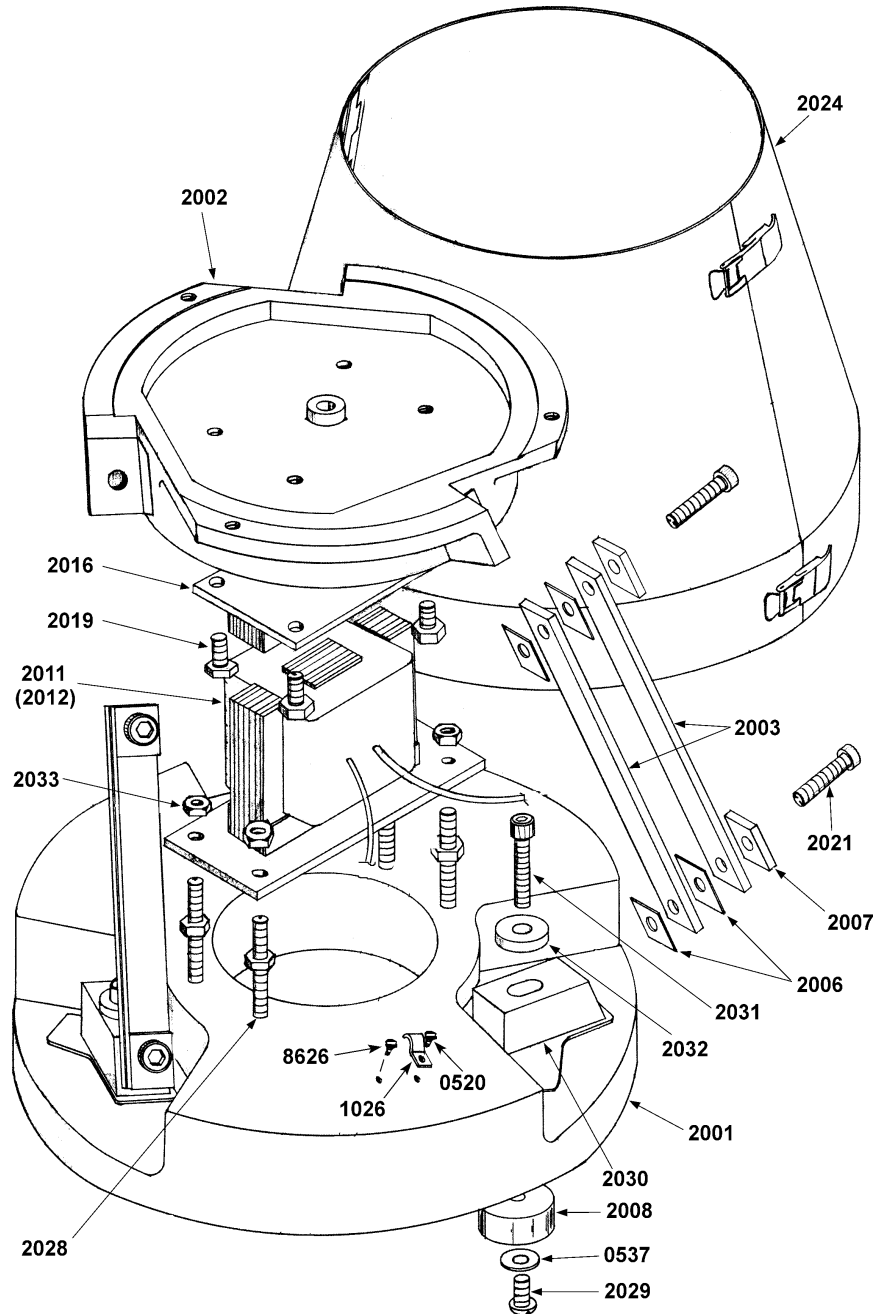
Automation Devices, Inc.

MODEL 20 BASE UNIT ASSEMBLY

Parts List		
Part No.	Qty	Description
0520	1	#10-32 X 3/8" RHMS
0537	3	3/8" Washer
1026	1	Cable Clamp
2001	1	Base Casting
2002	1	Top Casting
2003	*	Spring
2006	*	Spacer
2007	6	Pad
2008	3	Foot
2011	1	120 Volt Coil
2012	opt.	240 Volt Coil
2016	1	Armature
2019	4	3/8 -16 X 3/4" HHCS
2021	6	1/2-13 X 2 1/4 SHCS
2024	1	Shell
2028	4	1/2-13 Stud
2029	3	3/8 -16 X 1" RHMS
2030	3	Spring Block
2031	3	1/2-13 X 3" SHCS
2032	3	Washer
2033	8	1/2-13 Hex Nut
6938	1	Cord Assembly (Not shown)
8626	1	Green Ground Screw

* Quantity required depends on tuning for various bowl weights and operating frequency.

When ordering replacement parts, specify the *serial number* on the unit nameplate and/or stamped on the casting.



AE09.01

Automation Devices, Inc.

7050 West Ridge Road
Fairview, PA 16415-2099

Phone: 814-474-5561

FAX: 814-474-2131 or 800-235-9382

Web Site: www.autodev.com E-mail: info@autodev.com