

# Automation Devices, Inc.

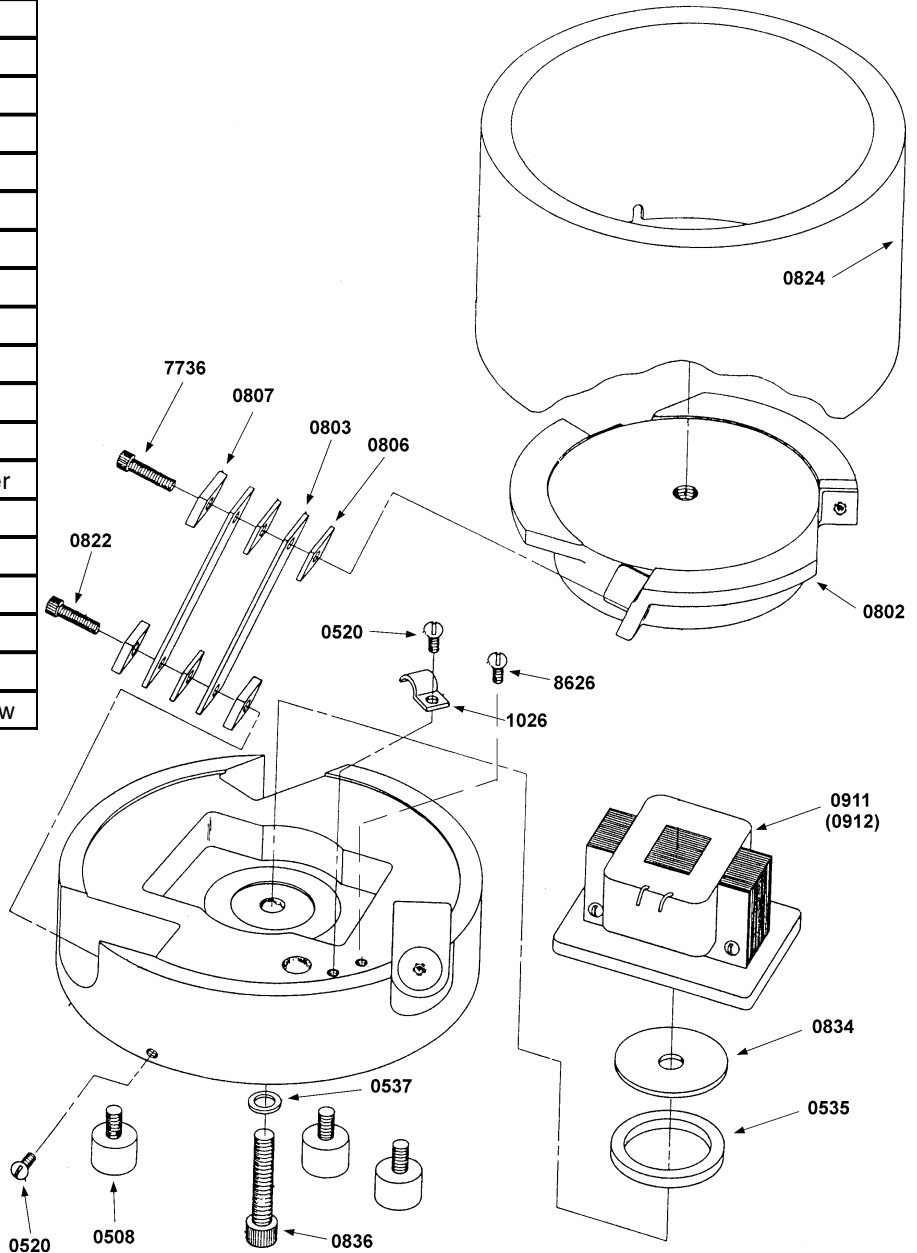
## MODEL 8 BASE UNIT ASSEMBLY DRAWING

| Parts List  |          |                         |
|-------------|----------|-------------------------|
| Part Number | Quantity | Description             |
| 0508        | 3        | Foot                    |
| 0520        | 2        | #10 - 32 x 3/8" RHMS    |
| 0535        | 1        | Rubber Adjusting Ring   |
| 0537        | 1        | 3/8" Washer             |
| 0801        | 1        | Base Casting            |
| 0802        | 1        | Top Casting             |
| 0803        | *        | Spring (1/32" Thick)    |
| 0804        | optional | Spring (3/64" Thick)    |
| 0805        | optional | Spring (1/8" Thick)     |
| 0806        | **       | Spring Spacer           |
| 0807        | 9        | Spring Pad              |
| 0822        | 3        | 1/4 - 20 x 1 SHCS       |
| 0824        | 1        | Shell                   |
| 0834        | 2        | Coil Adjustment Washer  |
| 0836        | 1        | 3/8 - 24 x 1 3/4" SHCS  |
| 0911        | 1        | 120 Volt Coil           |
| 0912        | optional | 240 Volt Coil           |
| 1026        | 1        | Cable Clamp             |
| 7736        | 3        | 1/4 - 20 x 7/8" SHCS    |
| 8626        | 1        | #10-32 x 3/8" Gnd Screw |

\* Quantity required depends on the tuning for various bowl weights and frequency. Other optional springs are available. When ordering replacement springs, specify the spring thickness.

\*\* Quantity required is determined by doubling the number of springs and subtracting 3.

When ordering replacement parts, specify the *serial number* on the unit nameplate.



AE03.01

### Automation Devices, Inc.

7050 West Ridge Road  
Fairview, PA 16415-2099

Phone: 814-474-5561

FAX: 814-474-2131 or 800-235-9382

Web Site: [www.autodev.com](http://www.autodev.com) E-mail: [info@autodev.com](mailto:info@autodev.com)