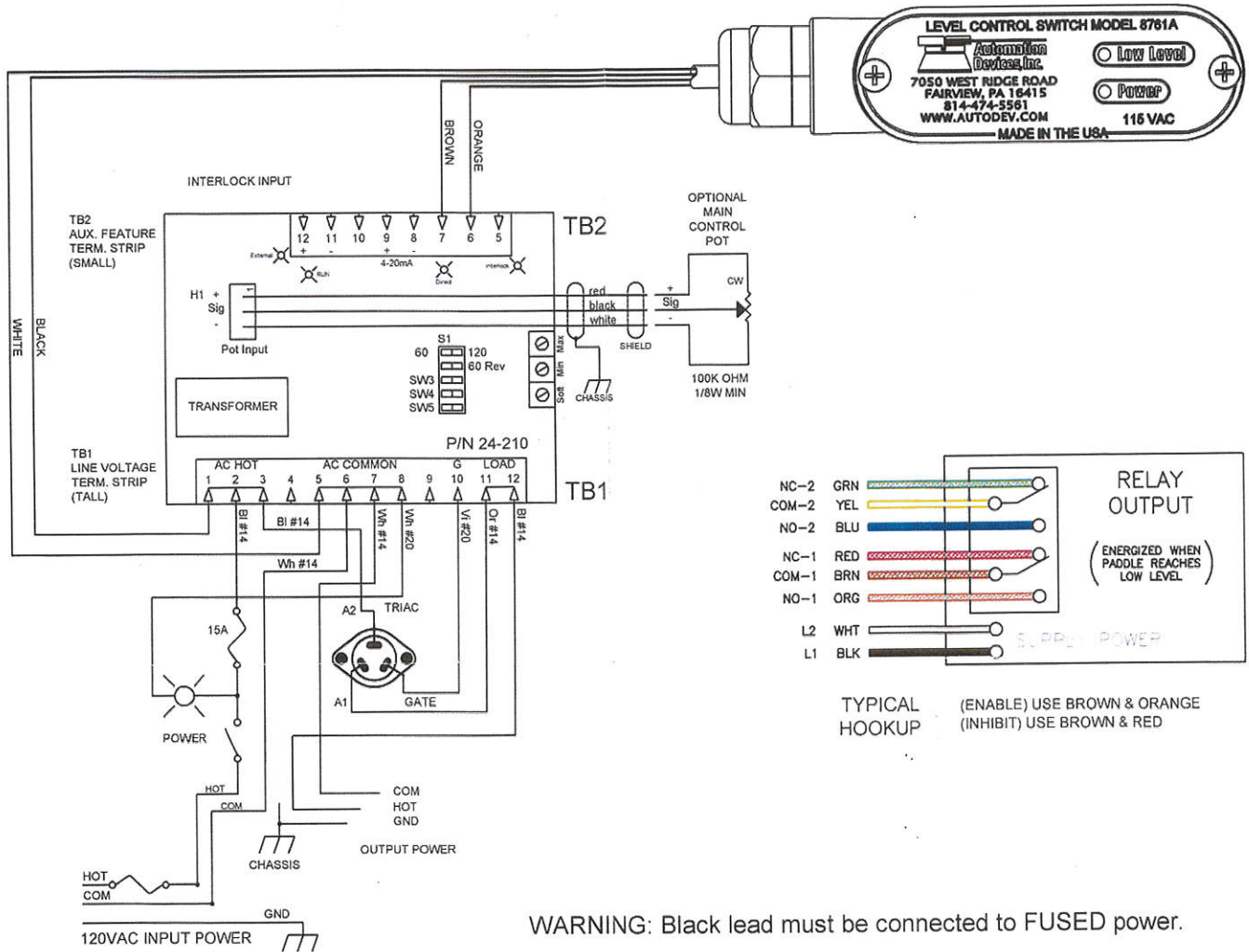


# AUTOMATION DEVICES, INC.

7050 WEST RIDGE ROAD, FAIRVIEW PA 16415-2099  
 PHONE: 814-474-5561 FAX: 814-474-2131 www.autodev.com

## TYPICAL WIRING DIAGRAMS FOR INSTALLATION OF 8761A LEVEL CONTROL SWITCH



### TIME DELAY ADJUSTMENT:

- 1) DISCONNECT POWER!!
- 2) REMOVE COVER AND CIRCUIT BOARD
- 3) SET "ON DELAY" TO DESIRED VALUE (0-10 SECONDS)
- 4) SET "OFF DELAY" TO DESIRED VALUE (0-10 SECONDS)
- 5) REPLACE BOARD AND COVER

- 0 SECONDS - NO DELAY
- 5 SECOND DELAY
- 10 SECOND DELAY

NOTE: OTHER DELAYS ARE POSSIBLE ANYWHERE BETWEEN THESE 0-10 SECOND SETTINGS

