

Automation Devices, Inc.

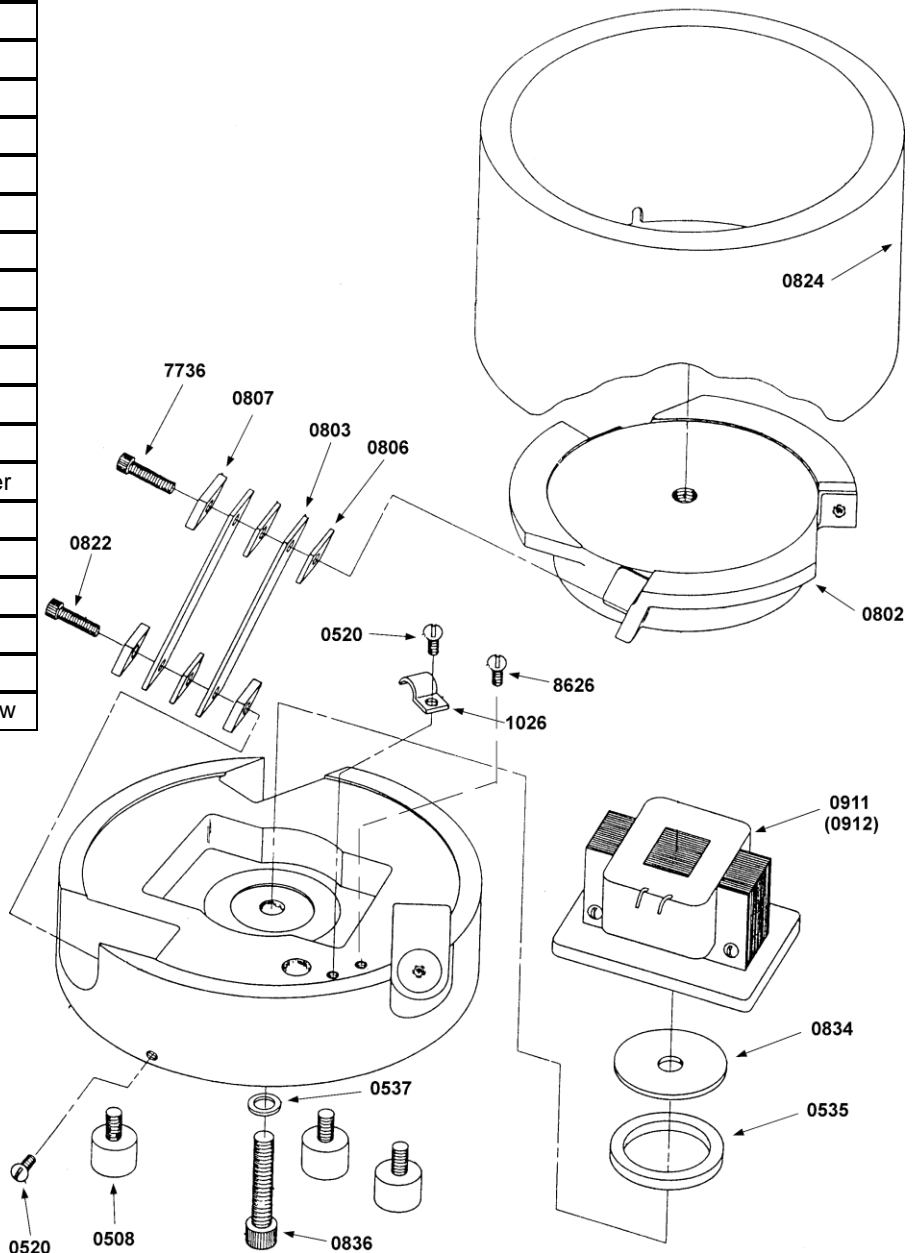
MODEL 8 BASE UNIT ASSEMBLY DRAWING

Parts List		
Part Number	Quantity	Description
0508	3	Foot
0520	2	#10 - 32 x $\frac{3}{8}$ " RHMS
0535	1	Rubber Adjusting Ring
0537	1	$\frac{3}{8}$ " Washer
0801	1	Base Casting
0802	1	Top Casting
0803	*	Spring ($\frac{1}{32}$ " Thick)
0804	optional	Spring ($\frac{3}{64}$ " Thick)
0805	optional	Spring ($\frac{1}{8}$ " Thick)
0806	**	Spring Spacer
0807	9	Spring Pad
0822	3	$\frac{1}{4}$ - 20 x 1 SHCS
0824	1	Shell
0834	2	Coil Adjustment Washer
0836	1	$\frac{3}{8}$ - 24 x $1\frac{3}{4}$ " SHCS
0911	1	120 Volt Coil
0912	optional	240 Volt Coil
1026	1	Cable Clamp
7736	3	$\frac{1}{4}$ - 20 x $\frac{7}{8}$ " SHCS
8626	1	#10-32 x $\frac{3}{8}$ " Gnd Screw

* Quantity required depends on the tuning for various bowl weights and frequency. Other optional springs are available. When ordering replacement springs, specify the spring thickness.

** Quantity required is determined by doubling the number of springs and subtracting 3.

When ordering replacement parts, specify the *serial number* on the unit nameplate.



AE03.02

Automation Devices, Inc.

7050 West Ridge Road
Fairview, PA 16415-2099

Phone: 814-474-5561

FAX: 814-474-2131

Web Site: www.autodev.com E-mail: sales@autodev.com