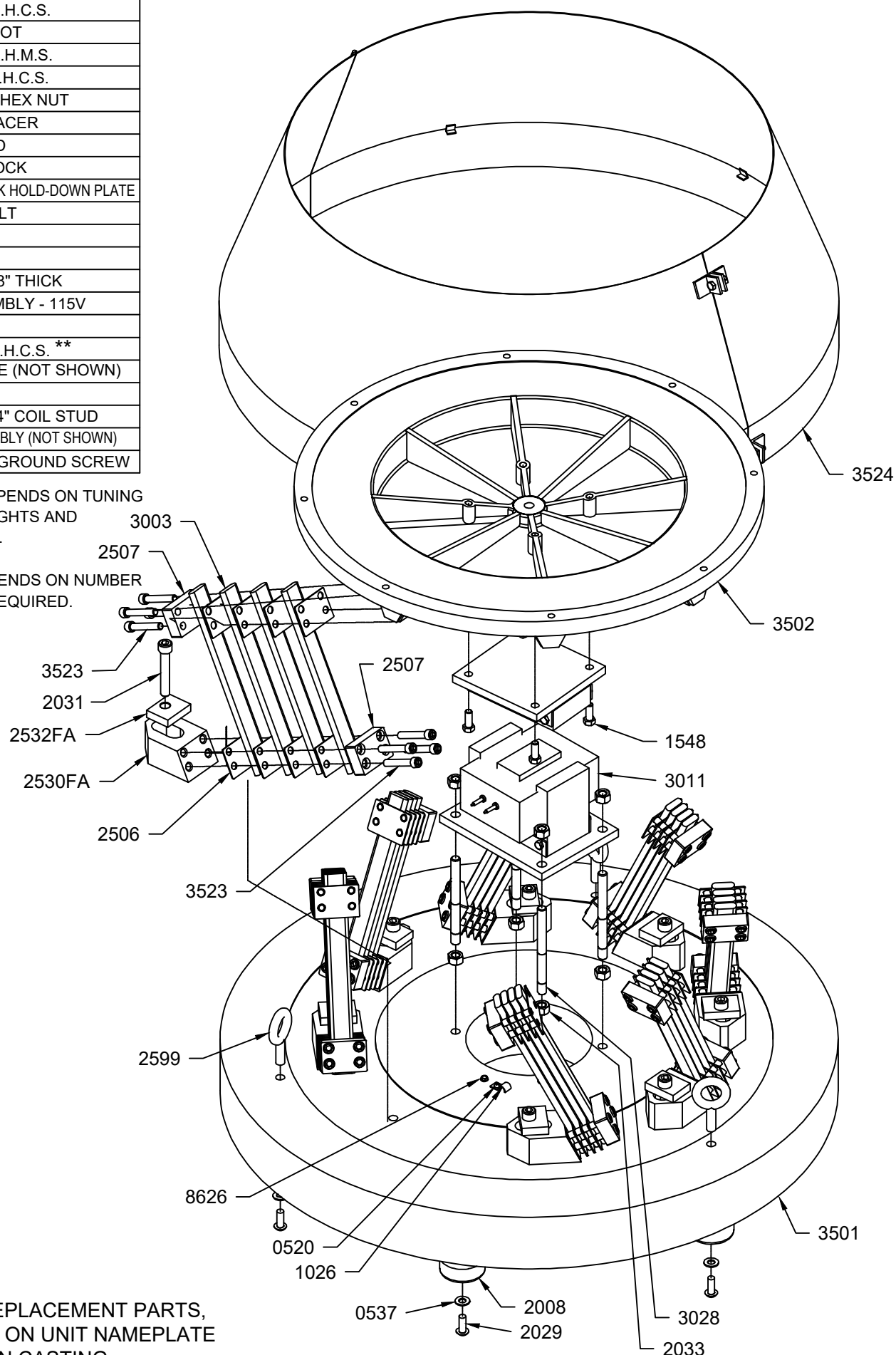


PART No.	QTY.	DESCRIPTION
0518	2	DRIVE SCREW (NOT SHOWN)
0520	1	10-32 x 3/8" R.H.M.S.
0537	6	3/8" WASHER
1026	1	CABLE CLAMP
1548	4	3/8-16 x 1" H.H.C.S.
2008	6	RUBBER FOOT
2029	6	3/8-16 x 1" R.H.M.S.
2031	8	1/2-13 x 3" S.H.C.S.
2033	8	1/2-13 FULL HEX NUT
2506	64*	SPRING SPACER
2507	16	SPRING PAD
2530FA	8	SPRING BLOCK
2532FA	8	SPRING BLOCK HOLD-DOWN PLATE
2599	3	1/2" EYE BOLT
3501	1	BASE
3502	1	TOP
3003	32*	SPRING - 3/8" THICK
3011	1	COIL ASSEMBLY - 115V
3016	1	ARMATURE
3523	64	3/8-16 x 3" S.H.C.S. **
3517	1	NAME PLATE (NOT SHOWN)
3524	1	SHELL
3028	4	1/2-13 x 5 3/4" COIL STUD
6938	1	CABLE ASSEMBLY (NOT SHOWN)
8626	1	10-32 x 3/8" GROUND SCREW

\* QUANTITY REQUIRED DEPENDS ON TUNING FOR VARIOUS BOWL WEIGHTS AND OPERATING FREQUENCY.

\*\* LENGTH REQUIRED DEPENDS ON NUMBER AND SIZE OF SPRINGS REQUIRED.



WHEN ORDERING REPLACEMENT PARTS, SPECIFY SERIAL NO. ON UNIT NAMEPLATE AND/OR STAMPED ON CASTING.